



University of the Philippines Visayas
Miagao, Iloilo

PHILIPPINE BIDDING DOCUMENTS PROCUREMENT OF INFRASTRUCTURE PROJECTS

PROJECT TITLE:

**REHABILITATION OF THE
DEPARTMENT OF CHEMISTRY
TEACHING LABORATORY (ITB-2024-
022)**

31 October 2024

Sixth Edition

Preface

These Philippine Bidding Documents (PBDs) for the procurement of Infrastructure Projects (hereinafter referred to also as the “Works”) through Competitive Bidding have been prepared by the Government of the Philippines for use by all branches, agencies, departments, bureaus, offices, or instrumentalities of the government, including government-owned and/or -controlled corporations, government financial institutions, state universities and colleges, local government units, and autonomous regional government. The procedures and practices presented in this document have been developed through broad experience, and are for mandatory use in projects that are financed in whole or in part by the Government of the Philippines or any foreign government/foreign or international financing institution in accordance with the provisions of the 2016 revised Implementing Rules and Regulations (IRR) of Republic Act (RA) No. 9184.

The PBDs are intended as a model for admeasurements (unit prices or unit rates in a bill of quantities) types of contract, which are the most common in Works contracting.

The Bidding Documents shall clearly and adequately define, among others: (i) the objectives, scope, and expected outputs and/or results of the proposed contract; (ii) the eligibility requirements of Bidders; (iii) the expected contract duration; and (iv) the obligations, duties, and/or functions of the winning Bidder.

Care should be taken to check the relevance of the provisions of the PBDs against the requirements of the specific Works to be procured. If duplication of a subject is inevitable in other sections of the document prepared by the Procuring Entity, care must be exercised to avoid contradictions between clauses dealing with the same matter.

Moreover, each section is prepared with notes intended only as information for the Procuring Entity or the person drafting the Bidding Documents. They shall not be included in the final documents. The following general directions should be observed when using the documents:

- a. All the documents listed in the Table of Contents are normally required for the procurement of Infrastructure Projects. However, they should be adapted as necessary to the circumstances of the particular Project.
- b. Specific details, such as the “*name of the Procuring Entity*” and “*address for bid submission*,” should be furnished in the Instructions to Bidders, Bid Data Sheet, and Special Conditions of Contract. The final documents should contain neither blank spaces nor options.
- c. This Preface and the footnotes or notes in italics included in the Invitation to Bid, BDS, General Conditions of Contract, Special Conditions of Contract, Specifications, Drawings, and Bill of Quantities are not part of the text of the final document, although they contain instructions that the Procuring Entity should strictly follow.
- d. The cover should be modified as required to identify the Bidding Documents as to the names of the Project, Contract, and Procuring Entity, in addition to date of issue.

- e. Modifications for specific Procurement Project details should be provided in the Special Conditions of Contract as amendments to the Conditions of Contract. For easy completion, whenever reference has to be made to specific clauses in the Bid Data Sheet or Special Conditions of Contract, these terms shall be printed in bold typeface on Sections I (Instructions to Bidders) and III (General Conditions of Contract), respectively.
- f. For guidelines on the use of Bidding Forms and the procurement of Foreign-Assisted Projects, these will be covered by a separate issuance of the Government Procurement Policy Board.

TABLE OF CONTENTS

GLOSSARY OF.....	5
TERMS, ABBREVIATIONS, AND ACRONYMS	5
SECTION I. INVITATION TO BID.....	8
SECTION II. INSTRUCTIONS TO BIDDERS	12
1. Scope of Bid.....	13
2. Funding Information	13
3. Bidding Requirements.....	13
4. Corrupt, Fraudulent, Collusive, Coercive, and Obstructive Practices	13
5. Eligible Bidders.....	14
6. Origin of Associated Goods	14
7. Subcontracts	14
8. Pre-Bid Conference.....	14
9. Clarification and Amendment of Bidding Documents.....	15
10. Documents Comprising the Bid: Eligibility and Technical Components.....	15
11. Documents Comprising the Bid: Financial Component	15
12. Alternative Bids	16
13. Bid Prices	16
14. Bid and Payment Currencies.....	16
15. Bid Security.....	16
16. Sealing and Marking of Bids.....	16
17. Deadline for Submission of Bids	17
18. Opening and Preliminary Examination of Bids	17
19. Detailed Evaluation and Comparison of Bids.....	17
20. Post Qualification.....	17
21. Signing of the Contract	18
SECTION III. BID DATA SHEET	19
SECTION IV. GENERAL CONDITIONS OF CONTRACT	21
1. Scope of Contract.....	22
2. Sectional Completion of Works.....	22
3. Possession of Site.....	22
4. The Contractor's Obligations.....	22
5. Performance Security	22

6.	Site Investigation Reports	23
7.	Warranty.....	23
8.	Liability of the Contractor.....	23
9.	Termination for Other Causes.....	23
10.	Dayworks	23
11.	Program of Work.....	24
12.	Instructions, Inspections and Audits	24
13.	Advance Payment.....	24
14.	Progress Payments	24
15.	Operating and Maintenance Manuals.....	24
SECTION V. SPECIAL CONDITIONS OF CONTRACT		26
SECTION VI. SPECIFICATIONS.....		29
SECTION VII. DRAWINGS		35
SECTION VIII. BILL OF QUANTITIES		55
SECTION IX. CHECKLIST OF TECHNICAL AND FINANCIAL DOCUMENTS		56
BID FORM		62

Glossary of Terms, Abbreviations, and Acronyms

ABC – Approved Budget for the Contract.

ARCC – Allowable Range of Contract Cost.

BAC – Bids and Awards Committee.

Bid – A signed offer or proposal to undertake a contract submitted by a bidder in response to and in consonance with the requirements of the bidding documents. Also referred to as *Proposal* and *Tender*. (2016 revised IRR, Section 5[c])

Bidder – Refers to a contractor, manufacturer, supplier, distributor and/or consultant who submits a bid in response to the requirements of the Bidding Documents. (2016 revised IRR, Section 5[d])

Bidding Documents – The documents issued by the Procuring Entity as the bases for bids, furnishing all information necessary for a prospective bidder to prepare a bid for the Goods, Infrastructure Projects, and/or Consulting Services required by the Procuring Entity. (2016 revised IRR, Section 5[e])

BIR – Bureau of Internal Revenue.

BSP – Bangko Sentral ng Pilipinas.

CDA – Cooperative Development Authority.

Consulting Services – Refer to services for Infrastructure Projects and other types of projects or activities of the GOP requiring adequate external technical and professional expertise that are beyond the capability and/or capacity of the GOP to undertake such as, but not limited to: (i) advisory and review services; (ii) pre-investment or feasibility studies; (iii) design; (iv) construction supervision; (v) management and related services; and (vi) other technical services or special studies. (2016 revised IRR, Section 5[i])

Contract – Refers to the agreement entered into between the Procuring Entity and the Supplier or Manufacturer or Distributor or Service Provider for procurement of Goods and Services; Contractor for Procurement of Infrastructure Projects; or Consultant or Consulting Firm for Procurement of Consulting Services; as the case may be, as recorded in the Contract Form signed by the parties, including all attachments and appendices thereto and all documents incorporated by reference therein.

Contractor – is a natural or juridical entity whose proposal was accepted by the Procuring Entity and to whom the Contract to execute the Work was awarded. Contractor as used in these Bidding Documents may likewise refer to a supplier, distributor, manufacturer, or consultant.

CPI – Consumer Price Index.

DOLE – Department of Labor and Employment.

DTI – Department of Trade and Industry.

Foreign-funded Procurement or Foreign-Assisted Project – Refers to procurement whose funding source is from a foreign government, foreign or international financing institution as specified in the Treaty or International or Executive Agreement. (2016 revised IRR, Section 5[b]).

GFI – Government Financial Institution.

GOCC – Government-owned and/or –controlled corporation.

Goods – Refer to all items, supplies, materials and general support services, except Consulting Services and Infrastructure Projects, which may be needed in the transaction of public businesses or in the pursuit of any government undertaking, project or activity, whether in the nature of equipment, furniture, stationery, materials for construction, or personal property of any kind, including non-personal or contractual services such as the repair and maintenance of equipment and furniture, as well as trucking, hauling, janitorial, security, and related or analogous services, as well as procurement of materials and supplies provided by the Procuring Entity for such services. The term “related” or “analogous services” shall include, but is not limited to, lease or purchase of office space, media advertisements, health maintenance services, and other services essential to the operation of the Procuring Entity. (2016 revised IRR, Section 5[r])

GOP – Government of the Philippines.

Infrastructure Projects – Include the construction, improvement, rehabilitation, demolition, repair, restoration or maintenance of roads and bridges, railways, airports, seaports, communication facilities, civil works components of information technology projects, irrigation, flood control and drainage, water supply, sanitation, sewerage and solid waste management systems, shore protection, energy/power and electrification facilities, national buildings, school buildings, hospital buildings, and other related construction projects of the government. Also referred to as *civil works or works*. (2016 revised IRR, Section 5[u])

LGUs – Local Government Units.

NFCC – Net Financial Contracting Capacity.

NGA – National Government Agency.

PCAB – Philippine Contractors Accreditation Board.

PhilGEPS - Philippine Government Electronic Procurement System.

Procurement Project – refers to a specific or identified procurement covering goods, infrastructure project or consulting services. A Procurement Project shall be described, detailed, and scheduled in the Project Procurement Management Plan prepared by the agency which shall be consolidated in the procuring entity's Annual Procurement Plan. (GPPB Circular No. 06-2019 dated 17 July 2019)

PSA – Philippine Statistics Authority.

SEC – Securities and Exchange Commission.

SLCC – Single Largest Completed Contract.

UN – United Nations.

Section I. Invitation to Bid



UNIVERSITY OF THE PHILIPPINES VISAYAS
Bids and Awards Committee
Miagao, Iloilo

**INVITATION TO BID FOR REHABILITATION OF THE
DEPARTMENT OF CHEMISTRY TEACHING
LABORATORY (ITB-2024-022)**

1. The *UNIVERSITY OF THE PHILIPPINES VISAYAS*, through the GAA 2024 intends to apply the sum FOUR MILLION THREE HUNDRED THIRTY ONE THOUSAND TWO HUNDRED THREE AND 56/100 PESOS (P4,331,203.56) being the Approved Budget for the Contract (ABC) to payments under the contract for “*REHABILITATION OF THE DEPARTMENT OF CHEMISTRY TEACHING LABORATORY (ITB-2024-022)*”. Bids received in excess of the ABC shall be automatically rejected at bid opening.
2. The *UNIVERSITY OF THE PHILIPPINES VISAYAS* now invites bids for the above Procurement Project. Completion of the Works is required 5 years. Bidders should have completed a contract similar to the Project. The description of an eligible bidder is contained in the Bidding Documents, particularly, in Section II (Instructions to Bidders).
3. Bidding will be conducted through open competitive bidding procedures using non-discretionary “*pass/fail*” criterion as specified in the 2016 revised Implementing Rules and Regulations (IRR) of Republic Act (RA) No. 9184.
4. Interested bidders may obtain further information from *UNIVERSITY OF THE PHILIPPINES VISAYAS* and inspect the Bidding Documents at the address given below from Monday – Friday, 9:00AM – 4:00PM except official holidays.
5. A complete set of Bidding Documents may be acquired by interested Bidders on *31 October 2024* from the given address and website(s) below and upon payment of the applicable fee for the Bidding Documents, pursuant to the latest Guidelines issued by the GPPB, in the amount of *FOUR THOUSAND PESOS (P4,000.00)*. The Procuring Entity shall allow the bidder to present its proof of payment for the fees by presenting the UPV Official Receipts (OR) of by sending a copy to the UPV BAC official email address.

Payment may be sent through:

Bank: Land Bank of the Philippines, Miag-ao Branch
Account No: 3052 1015 13
Account Name: UP VISAYAS

Deposit slips/proof of payment must be sent to bac@upv.edu.ph for confirmation.

6. *UNIVERSITY OF THE PHILIPPINES VISAYAS* will hold a Pre-Bid Conference¹ on 9:00AM, 08 November 2024 at CM12, College of Management Bldg., UP Visayas, Iloilo City and/or through video conferencing or webcasting via ZOOM (Meeting ID: 879 737 7116 Passcode: upvbac2022), which shall be open to prospective bidders.
7. Bids must be duly received by the BAC Secretariat through manual submission at the office address indicated below, on or before 9:00AM, 22 November 2024. Late bids shall not be accepted.
8. All bids must be accompanied by a bid security in any of the acceptable forms and in the amount stated in **ITB** Clause 16.
9. Bid opening shall be on 9:00AM, 22 November 2024 at the given address below and/or via ZOOM (Meeting ID: 879 737 7116 Passcode: upvbac2022). Bids will be opened in the presence of the bidders' representatives who choose to attend the activity.
10. *No further instructions.*
11. The *UNIVERSITY OF THE PHILIPPINES VISAYAS* reserves the right to reject any and all bids, declare a failure of bidding, or not award the contract at any time prior to contract award in accordance with Sections 35.6 and 41 of the 2016 revised Implementing Rules and Regulations (IRR) of RA No. 9184, without thereby incurring any liability to the affected bidder or bidders.
12. For further information, please refer to:

BAC Official Address:	Venue for Pre-Bidding Conferences and Opening of Bids:
<i>MS. ARLENE N. AVANCENA</i> <i>Chair, Bids and Awards Committee</i> <i>SPSO, Administrative Services Bldg.,</i> <i>UNIVERSITY OF THE PHILIPPINES VISAYAS</i> <i>Gen. Luna St., Iloilo City 5000</i> <i>(033) 315 9632 loc 181 or 0917 147 5733</i> <i>bac@upv.edu.ph</i>	CM12, College of Management Bldg., UP Visayas, Iloilo City

13. You may visit the following websites:

For downloading of Bidding Documents: *upv.edu.ph*

Date of Issue: _____

ARLENE N. AVANCENA
BAC Chair

Section II. Instructions to Bidders

Notes on the Instructions to Bidders

This Section on the Instruction to Bidders (ITB) provides the information necessary for bidders to prepare responsive bids, in accordance with the requirements of the Procuring Entity. It also provides information on bid submission, eligibility check, opening and evaluation of bids, post-qualification, and on the award of contract.

1. Scope of Bid

The Procuring Entity, *UNIVERSITY OF THE PHILIPPINES VISAYAS* invites Bids for the REHABILITATION OF THE DEPARTMENT OF CHEMISTRY TEACHING LABORATORY (ITB-2024-022), with Project Identification Number *REHABILITATION OF THE DEPARTMENT OF CHEMISTRY TEACHING LABORATORY (ITB-2024-022)*.

The Procurement Project (referred to herein as “Project”) is for the construction of Works, as described in Section VI (Specifications).

2. Funding Information

2.1. The GOP through the source of funding as indicated below for 2024 in the amount of *FOUR MILLION THREE HUNDRED THIRTY ONE THOUSAND TWO HUNDRED THREE AND 56/100 PESOS (P4,331,203.56)*.

2.2. The source of funding is:

- a. NGA, the General Appropriations Act or Special Appropriations.
(EM 2024-09-1165 UGTI)

3. Bidding Requirements

The Bidding for the Project shall be governed by all the provisions of RA No. 9184 and its 2016 revised IRR, including its Generic Procurement Manual and associated policies, rules and regulations as the primary source thereof, while the herein clauses shall serve as the secondary source thereof.

Any amendments made to the IRR and other GPPB issuances shall be applicable only to the ongoing posting, advertisement, or invitation to bid by the BAC through the issuance of a supplemental or bid bulletin.

The Bidder, by the act of submitting its Bid, shall be deemed to have inspected the site, determined the general characteristics of the contracted Works and the conditions for this Project, such as the location and the nature of the work; (b) climatic conditions; (c) transportation facilities; (c) nature and condition of the terrain, geological conditions at the site communication facilities, requirements, location and availability of construction aggregates and other materials, labor, water, electric power and access roads; and (d) other factors that may affect the cost, duration and execution or implementation of the contract, project, or work and examine all instructions, forms, terms, and project requirements in the Bidding Documents.

4. Corrupt, Fraudulent, Collusive, Coercive, and Obstructive Practices

The Procuring Entity, as well as the Bidders and Contractors, shall observe the highest standard of ethics during the procurement and execution of the contract. They or through an agent shall not engage in corrupt, fraudulent, collusive, coercive, and

obstructive practices defined under Annex “I” of the 2016 revised IRR of RA No. 9184 or other integrity violations in competing for the Project.

5. Eligible Bidders

- 5.1. Only Bids of Bidders found to be legally, technically, and financially capable will be evaluated.
- 5.2. The Bidder must have an experience of having completed a Single Largest Completed Contract (SLCC) that is similar to this Project, equivalent to at least fifty percent (50%) of the ABC adjusted, if necessary, by the Bidder to current prices using the PSA’s CPI, except under conditions provided for in Section 23.4.2.4 of the 2016 revised IRR of RA No. 9184.

A contract is considered to be “similar” to the contract to be bid if it has the major categories of work stated in the **BDS**.

- 5.3. For Foreign-funded Procurement, the Procuring Entity and the foreign government/foreign or international financing institution may agree on another track record requirement, as specified in the Bidding Document prepared for this purpose.
- 5.4. The Bidders shall comply with the eligibility criteria under Section 23.4.2 of the 2016 IRR of RA No. 9184.

6. Origin of Associated Goods

There is no restriction on the origin of Goods other than those prohibited by a decision of the UN Security Council taken under Chapter VII of the Charter of the UN.

7. Subcontracts

- 7.1. The Bidder may subcontract portions of the Project to the extent allowed by the Procuring Entity as stated herein, but in no case more than fifty percent (50%) of the Project.

The Procuring Entity has prescribed that:

- a. Subcontracting is not allowed.

7.1. *No instructions.*

7.2. *No instructions.*

7.3. *No instructions.*

8. Pre-Bid Conference

The Procuring Entity will hold a pre-bid conference for this Project on the specified date and time 9:00AM, 08 November 2024 and either at its physical address CM12,

College of Management Bldg., UP Visayas, Iloilo City or via *ZOOM* (Meeting ID: 879 737 7116 Passcode: *upvbac2022* as indicated in paragraph 6 of the **IB**).

9. Clarification and Amendment of Bidding Documents

Prospective bidders may request for clarification on and/or interpretation of any part of the Bidding Documents. Such requests must be in writing and received by the Procuring Entity, either at its given address or through electronic mail indicated in the **IB**, at least ten (10) calendar days before the deadline set for the submission and receipt of Bids.

10. Documents Comprising the Bid: Eligibility and Technical Components

- 10.1. The first envelope shall contain the eligibility and technical documents of the Bid as specified in **Section IX. Checklist of Technical and Financial Documents**.
- 10.2. If the eligibility requirements or statements, the bids, and all other documents for submission to the BAC are in foreign language other than English, it must be accompanied by a translation in English, which shall be authenticated by the appropriate Philippine foreign service establishment, post, or the equivalent office having jurisdiction over the foreign bidder's affairs in the Philippines. For Contracting Parties to the Apostille Convention, only the translated documents shall be authenticated through an apostille pursuant to GPPB Resolution No. 13-2019 dated 23 May 2019. The English translation shall govern, for purposes of interpretation of the bid.
- 10.3. A valid special PCAB License in case of Joint Ventures, and registration for the type and cost of the contract for this Project. Any additional type of Contractor license or permit shall be indicated in the **BDS**.
- 10.4. A List of Contractor's key personnel (e.g., Project Manager, Project Engineers, Materials Engineers, and Foremen) assigned to the contract to be bid, with their complete qualification and experience data shall be provided. These key personnel must meet the required minimum years of experience set in the **BDS**.
- 10.5. A List of Contractor's major equipment units, which are owned, leased, and/or under purchase agreements, supported by proof of ownership, certification of availability of equipment from the equipment lessor/vendor for the duration of the project, as the case may be, must meet the minimum requirements for the contract set in the **BDS**.

11. Documents Comprising the Bid: Financial Component

- 11.1. The second bid envelope shall contain the financial documents for the Bid as specified in **Section IX. Checklist of Technical and Financial Documents**.

- 11.2. Any bid exceeding the ABC indicated in paragraph 1 of the **IB** shall not be accepted.
- 11.3. For Foreign-funded procurement, a ceiling may be applied to bid prices provided the conditions are met under Section 31.2 of the 2016 revised IRR of RA No. 9184.

12. Alternative Bids

Bidders shall submit offers that comply with the requirements of the Bidding Documents, including the basic technical design as indicated in the drawings and specifications. Unless there is a value engineering clause in the **BDS**, alternative Bids shall not be accepted.

13. Bid Prices

All bid prices for the given scope of work in the Project as awarded shall be considered as fixed prices, and therefore not subject to price escalation during contract implementation, except under extraordinary circumstances as determined by the NEDA and approved by the GPPB pursuant to the revised Guidelines for Contract Price Escalation guidelines.

14. Bid and Payment Currencies

14.1. Bid prices may be quoted in the local currency or tradeable currency accepted by the BSP at the discretion of the Bidder. However, for purposes of bid evaluation, Bids denominated in foreign currencies shall be converted to Philippine currency based on the exchange rate as published in the BSP reference rate bulletin on the day of the bid opening.

14.2. *Payment of the contract price shall be made in:*

- a. Philippine Pesos.

15. Bid Security

15.1. The Bidder shall submit a Bid Securing Declaration or any form of Bid Security in the amount indicated in the **BDS**, which shall be not less than the percentage of the ABC in accordance with the schedule in the **BDS**.

15.2. The Bid and bid security shall be valid until 120 days after bid opening. Any bid not accompanied by an acceptable bid security shall be rejected by the Procuring Entity as non-responsive.

16. Sealing and Marking of Bids

Each Bidder shall submit one copy of the first and second components of its Bid.

The Procuring Entity may request additional hard copies and/or electronic copies of the Bid. However, failure of the Bidders to comply with the said request shall not be a ground for disqualification.

If the Procuring Entity allows the submission of bids through online submission to the given website or any other electronic means, the Bidder shall submit an electronic copy of its Bid, which must be digitally signed. An electronic copy that cannot be opened or is corrupted shall be considered non-responsive and, thus, automatically disqualified.

17. Deadline for Submission of Bids

The Bidders shall submit on the specified date and time and either at its physical address or through online submission as indicated in paragraph 7 of the **IB**.

18. Opening and Preliminary Examination of Bids

18.1. The BAC shall open the Bids in public at the time, on the date, and at the place specified in paragraph 9 of the **IB**. The Bidders' representatives who are present shall sign a register evidencing their attendance. In case videoconferencing, webcasting or other similar technologies will be used, attendance of participants shall likewise be recorded by the BAC Secretariat.

In case the Bids cannot be opened as scheduled due to justifiable reasons, the rescheduling requirements under Section 29 of the 2016 revised IRR of RA No. 9184 shall prevail.

18.2. The preliminary examination of Bids shall be governed by Section 30 of the 2016 revised IRR of RA No. 9184.

19. Detailed Evaluation and Comparison of Bids

19.1. The Procuring Entity's BAC shall immediately conduct a detailed evaluation of all Bids rated "*passed*" using non-discretionary pass/fail criteria. The BAC shall consider the conditions in the evaluation of Bids under Section 32.2 of 2016 revised IRR of RA No. 9184.

19.2. If the Project allows partial bids, all Bids and combinations of Bids as indicated in the **BDS** shall be received by the same deadline and opened and evaluated simultaneously so as to determine the Bid or combination of Bids offering the lowest calculated cost to the Procuring Entity. Bid Security as required by **ITB** Clause 15 shall be submitted for each contract (lot) separately.

19.3. In all cases, the NFCC computation pursuant to Section 23.4.2.6 of the 2016 revised IRR of RA No. 9184 must be sufficient for the total of the ABCs for all the lots participated in by the prospective Bidder.

20. Post Qualification

Within a non-extendible period of five (5) calendar days from receipt by the Bidder of the notice from the BAC that it submitted the Lowest Calculated Bid, the Bidder shall

submit its latest income and business tax returns filed and paid through the BIR Electronic Filing and Payment System (eFPS), and other appropriate licenses and permits required by law and stated in the **BDS**.

21. Signing of the Contract

The documents required in Section 37.2 of the 2016 revised IRR of RA No. 9184 shall form part of the Contract. Additional Contract documents are indicated in the **BDS**.

Section III. Bid Data Sheet

Bid Data Sheet

ITB Clause	
5.2	For this purpose, contracts similar to the Project refer to contracts which have the same major categories of work, which shall be: <i>General engineering/construction/rehabilitation works.</i>
7.1	<i>Subcontracting is NOT allowed.</i>
10.3	<i>All applicable Contractor license or permit(s) are required. PCAB License Category D or higher</i>
10.4	The key personnel must meet the required minimum years of experience set below:
	<u>Key Personnel</u> <u>General Experience</u> <u>Relevant Experience</u> (As indicated in the scope of works)
10.5	The minimum major equipment requirements are the following:
	<u>Equipment</u> <u>Capacity</u> <u>Number of Units</u> (As indicated in the scope of works)
12	<i>No further instructions.</i>
15.1	The bid security shall be in the form of a Bid Securing Declaration or any of the following forms and amounts: a. The amount of not less than P86,624.07 <i>[two percent (2%) of FOUR MILLION THREE HUNDRED THIRTY ONE THOUSAND TWO HUNDRED THREE AND 56/100 PESOS (P4,331,203.56)]</i> , if bid security is in cash, cashier's/manager's check, bank draft/guarantee or irrevocable letter of credit; b. The amount of not less than P216,560.18 <i>[five percent (5%) of FOUR MILLION THREE HUNDRED THIRTY ONE THOUSAND TWO HUNDRED THREE AND 56/100 PESOS (P4,331,203.56)]</i> if bid security is in Surety Bond.
19.2	<i>No further instructions.</i>
20	<i>All applicable licenses and permits relevant to the Project and the corresponding law requiring it is required.</i>
21	Additional contract documents relevant to the Project that may be required by existing laws and/or the Procuring Entity, such as construction schedule and S-curve, manpower schedule, construction methods, equipment utilization schedule, construction safety and health program approved by the DOLE, and other acceptable tools of project scheduling.

Section IV. General Conditions of Contract

1. Scope of Contract

This Contract shall include all such items, although not specifically mentioned, that can be reasonably inferred as being required for its completion as if such items were expressly mentioned herein. All the provisions of RA No. 9184 and its 2016 revised IRR, including the Generic Procurement Manual, and associated issuances, constitute the primary source for the terms and conditions of the Contract, and thus, applicable in contract implementation. Herein clauses shall serve as the secondary source for the terms and conditions of the Contract.

This is without prejudice to Sections 74.1 and 74.2 of the 2016 revised IRR of RA No. 9184 allowing the GPPB to amend the IRR, which shall be applied to all procurement activities, the advertisement, posting, or invitation of which were issued after the effectivity of the said amendment.

2. Sectional Completion of Works

If sectional completion is specified in the **Special Conditions of Contract (SCC)**, references in the Conditions of Contract to the Works, the Completion Date, and the Intended Completion Date shall apply to any Section of the Works (other than references to the Completion Date and Intended Completion Date for the whole of the Works).

3. Possession of Site

3.1 The Procuring Entity shall give possession of all or parts of the Site to the Contractor based on the schedule of delivery indicated in the **SCC**, which corresponds to the execution of the Works. If the Contractor suffers delay or incurs cost from failure on the part of the Procuring Entity to give possession in accordance with the terms of this clause, the Procuring Entity's Representative shall give the Contractor a Contract Time Extension and certify such sum as fair to cover the cost incurred, which sum shall be paid by Procuring Entity.

3.2 If possession of a portion is not given by the above date, the Procuring Entity will be deemed to have delayed the start of the relevant activities. The resulting adjustments in contract time to address such delay may be addressed through contract extension provided under Annex "E" of the 2016 revised IRR of RA No. 9184.

4. The Contractor's Obligations

The Contractor shall employ the key personnel named in the Schedule of Key Personnel indicating their designation, in accordance with **ITB** Clause 10.3 and specified in the **BDS**, to carry out the supervision of the Works.

The Procuring Entity will approve any proposed replacement of key personnel only if their relevant qualifications and abilities are equal to or better than those of the personnel listed in the Schedule.

5. Performance Security

- 5.1. Within ten (10) calendar days from receipt of the Notice of Award from the Procuring Entity but in no case later than the signing of the contract by both parties, the successful Bidder shall furnish the performance security in any of the forms prescribed in Section 39 of the 2016 revised IRR.
- 5.2. The Contractor, by entering into the Contract with the Procuring Entity, acknowledges the right of the Procuring Entity to institute action pursuant to RA No. 3688 against any subcontractor be they an individual, firm, partnership, corporation, or association supplying the Contractor with labor, materials and/or equipment for the performance of this Contract.

6. Site Investigation Reports

The Contractor, in preparing the Bid, shall rely on any Site Investigation Reports referred to in the SCC supplemented by any information obtained by the Contractor.

7. Warranty

- 7.1. In case the Contractor fails to undertake the repair works under Section 62.2.2 of the 2016 revised IRR, the Procuring Entity shall forfeit its performance security, subject its property(ies) to attachment or garnishment proceedings, and perpetually disqualify it from participating in any public bidding. All payables of the GOP in his favor shall be offset to recover the costs.
- 7.2. The warranty against Structural Defects/Failures, except that occasioned-on force majeure, shall cover the period from the date of issuance of the Certificate of Final Acceptance by the Procuring Entity. Specific duration of the warranty is found in the SCC.

8. Liability of the Contractor

Subject to additional provisions, if any, set forth in the SCC, the Contractor's liability under this Contract shall be as provided by the laws of the Republic of the Philippines.

If the Contractor is a joint venture, all partners to the joint venture shall be jointly and severally liable to the Procuring Entity.

9. Termination for Other Causes

Contract termination shall be initiated in case it is determined *prima facie* by the Procuring Entity that the Contractor has engaged, before, or during the implementation of the contract, in unlawful deeds and behaviors relative to contract acquisition and implementation, such as, but not limited to corrupt, fraudulent, collusive, coercive, and obstructive practices as stated in ITB Clause 4.

10. Dayworks

Subject to the guidelines on Variation Order in Annex “E” of the 2016 revised IRR of RA No. 9184, and if applicable as indicated in the SCC, the Dayworks rates in the Contractor’s Bid shall be used for small additional amounts of work only when the Procuring Entity’s Representative has given written instructions in advance for additional work to be paid for in that way.

11. Program of Work

- 11.1. The Contractor shall submit to the Procuring Entity’s Representative for approval the said Program of Work showing the general methods, arrangements, order, and timing for all the activities in the Works. The submissions of the Program of Work are indicated in the SCC.
- 11.2. The Contractor shall submit to the Procuring Entity’s Representative for approval an updated Program of Work at intervals no longer than the period stated in the SCC. If the Contractor does not submit an updated Program of Work within this period, the Procuring Entity’s Representative may withhold the amount stated in the SCC from the next payment certificate and continue to withhold this amount until the next payment after the date on which the overdue Program of Work has been submitted.

12. Instructions, Inspections and Audits

The Contractor shall permit the GOP or the Procuring Entity to inspect the Contractor’s accounts and records relating to the performance of the Contractor and to have them audited by auditors of the GOP or the Procuring Entity, as may be required.

13. Advance Payment

The Procuring Entity shall, upon a written request of the Contractor which shall be submitted as a Contract document, make an advance payment to the Contractor in an amount not exceeding fifteen percent (15%) of the total contract price, to be made in lump sum, or at the most two installments according to a schedule specified in the SCC, subject to the requirements in Annex “E” of the 2016 revised IRR of RA No. 9184.

14. Progress Payments

The Contractor may submit a request for payment for Work accomplished. Such requests for payment shall be verified and certified by the Procuring Entity’s Representative/Project Engineer. Except as otherwise stipulated in the SCC, materials and equipment delivered on the site but not completely put in place shall not be included for payment.

15. Operating and Maintenance Manuals

- 15.1. If required, the Contractor will provide “as built” Drawings and/or operating and maintenance manuals as specified in the SCC.

- 15.2. If the Contractor does not provide the Drawings and/or manuals by the dates stated above, or they do not receive the Procuring Entity's Representative's approval, the Procuring Entity's Representative may withhold the amount stated in the SCC from payments due to the Contractor.

Section V. Special Conditions of Contract

Special Conditions of Contract

GCC Clause	
2	<i>Refer to attached scheduling.</i>
4.1	<i>Project site is UNIVERSITY OF THE PHILIPPINES property.</i>
6	<i>No further instructions.</i>
7.2	Five (5) years.
10	No dayworks are applicable to the contract.
11.1	The Contractor shall submit the Program of Work to the Procuring Entity's Representative within 15 days of delivery of the Notice of Award.
11.2	The amount to be withheld for late submission of an updated Program of Work is 10% of the contract price.
13	The amount of the advance payment <i>shall not exceed 15% of the total contract price and schedule of payment.</i>
14	Materials and equipment delivered on the site but not completely put in place shall be included for payment.
15.1	The date by which operating and maintenance manuals are required is <i>within 30 days of completion..</i> The date by which "as built" drawings are required is <i>within 30 days of completion.</i>
15.2	The amount to be withheld for failing to produce "as built" drawings and/or operating and maintenance manuals by the date required is <i>10% of the contract price.</i>

Section VI. Specifications

CONTRACT DURATION: 107 CALENDAR DAYS

Additional documents for submission with the bid:

- **Questionnaire for Prospective Bidders duly accomplished and notarized (see attached template)**
- **Certificate of Site Inspection (schedule will be discussed during the pre-bid conference)**

SCOPE OF WORKS

B. SCOPE OF WORK: (supply of labor, materials, tools and equipment)

I General Requirements

- I.a. Temporary Facilities
 - Temporary bunkhouse for working personnel
 - Office
 - Fence/Enclosure
- I.b. Safety and Health
 - Early warning devices/signages.
 - PPE's, Alcohol, Facemask, Thermal scanner, etc...
- I.c. Electricity and Water Consumption
 - Electricity & Water Meter
 - Electricity Consumption
 - Water Consumption
- I.d. Mobilization and Demobilization
 - Rental of truck

II Chemistry Lab. (Room B-21)

- II.a. Site Preparation, Demolition of existing center/side laboratory tables, Demolition of existing floor, removal of existing doors, transfer of affected display cabinets and disposal of debris to the designated dumping site & Lay-out
- II.b. Concreting of floor
- II.c. Painting of floor
- II.d. Repair and repainting of interior walls and ceiling
- II.e. Replacement of existing doors
- II.f. Plumbing (Sanitary & Water Lines) to include provisions for the installation of emergency showers w/ eye wash and fume hoods
 - Sanitary line
 - Water line
- II.g. Gas line
- II.h. Fabrication and installation of one (1) unit blackboard
- II.i. Construction of two (2) units new laboratory center table.
- II.j. Construction of one (1) unit teacher's table
- II.k. Construction of side table
- II.l. Electrical
 - Replacement of all existing convenience outlet into wide series, 3-rong w/ground connected.
 - Installation of additional convenience outlets, switches and lighting fixtures

Re-wiring of convenience outlet with ground wire connected
Provide and installation of emergency light

III Chemistry Laboratory 217 & 218

- III.a Site Preparation, Demolition of existing center laboratory tables and ceiling, removal of existing doors, transfer of affected display cabinets and disposal of debris to the designated dumping site & Lay-out
- III.b. Installation of new ceiling
- III.c. Repair and repainting of walls
- III.d. Replacement of existing doors and fixed glass windows
- III.e. Plumbing (Sanitary & Water Lines) to include provisions for the installation of emergency showers w/ eye wash and fume hoods
- III.f. Gas line
- III.g. Fabrication and installation of two (2) units blackboards
- III.h. Construction of four (4) units center laboratory table (2 for Lab 217 & 2 for Lab 218)
- III.i. Construction of two (2) units teacher's table (for Lab 217 & 218)
- III.j. Repair of side tables
- III.k. Electrical
Installation of power panel and service line at room 217 and 218
Provide, replacement, installation of all lightings fixtures and switches.
Provide, lay-out and installation of uPVC Pipes, mouldings and boxes for new circuits indicated in the plan.
Provide and installation of switches, lighting's and outlets fixtures.
Provide and installation of emergency light
Pull-out existing panelboard at Room 217 and 218 and other un-used electrical fixtures and wires
Connection of service line
Replacement of MCCB, 3-phase, 65Kaic @240V, Bolt-on at Electrical room at basement

C. SPECIFICATIONS:

I. CIVIL WORKS

EARTH WORK

- A. Execute work as per plans and specifications. Make no changes there from without having received written instructions or permission. Where detailed information is lacking, before proceeding with the work, refer matter to the engineer.
- B. Execute footings and foundations to required depth as indicated in the drawing plans or as per direction of the engineer.

CONCRETE AND REINFORCED CONCRETE

A. Furnish labor materials, equipment to complete the work as indicated herein or in the working drawings and or the scope of work.

B. Unless otherwise indicated on the drawing or specified herein, undertake all concrete work in accordance with “Specifications for Concrete and Reinforced Concrete” as adopted by the Department of Public Works and Highways (DPWH).

C. Materials:

Cement: Use Portland Cement conforming to and in accordance with the “Standard Specifications for Portland Cement”.

Fine Aggregates: Use well graded, washed sand having clean, hard, durable, uncoated particles free from injurious amounts of dust, lumps of soft clay and flaky particles, shells, alkali organic matter, loam and other deleterious materials. Maximum diameter: 1/4”.

Water: Clean, fresh and potable water.

Reinforcing Bars: Use sizes as indicated in the drawings, $F_y = 275$ Mpa, grade 40.

Ties: For reinforcing bars, use No. 16 GI wires.

D. Concrete Mixes:

1. Use 3500 psi concrete in the project.

E. Concrete Placement

- In placing concrete, use bucket or buggy to transport. Place concrete not over 0.60 meters deep; compact each layer thoroughly mechanically or manually. Do not use vibrators to transport concrete inside the forms and limit vibration duration to time necessary to produce satisfactory consolidation without causing objectionable segregation of aggregates.

F. Exterior walls and partitions indicated in the plan as CHB wall shall be 4” cement hollow blocks with vertical and horizontal reinforcement as indicated in plans.

G. Concrete Finishes:

- Clean and wash down all that are to receive plaster for reinforced concrete walls, remove surface 1/16” deep, expose aggregates then wash down and leave clean, firm, rough granular surface.

- Apply coats of cement plaster.

- Scratch coat, one part cement, three parts fine sand, finish coat not less than 1/4”.

- After setting, keep finish coat surface damp for seven days.

PAINTING/REPAINTING WORKS (2 coats for repainting, 3 coats for painting)

- Work includes complete repainting of walls (inner surfaces), columns, door and window grills. Use “Boysen Paints” or approved equivalent.

- For all masonry and concrete surfaces except floors, Semigloss latex shall be used.

- Use products and materials only in accordance with manufacturer’s instructions.

- Color scheme shall be as directed by the engineer or the owner.

For floor Painting (at Chem Lab B21)

- Use Powerfloor paint or approved equivalent.
- Painting System:
 - Apply one coat of Eposeal.
 - Putty hollow surfaces with Epopatch.
 - Finish with two coats Powerfloor paint .
- Color shall be determined by the end user.
- No painting shall be done under condition that are unstable for the production of good results.

CEILING

- Ceiling board :3.50mmthk x 4' x 8' Ficem Board with 3 coats flat latex paint
- For metal frame use:
 - 0540mm thk x 25mm x 25mm Wall Angle
 - 0.50mm thk x 19mm x 50mm J-Furring space at 0.40m bothways
 - 0.80mm x 12mm x 38mm Carrying Channel at 1.20m on center
 - W-Clip

DOORS & WINDOWS

- Please refer to approved plan and estimate

PLUMBING

- For water line, use PN20 PPR pipes and fitting with sizes as indicated in the approved plan.
- Stand pipes shall be GI schedule 40 pipes, galvanized with epoxy on all joints
- Sanitary pipes & fittings shall be series-1000 PVC with epoxy leak sealant on all joints with sizes as indicated in the approved plan.
- Installation of new Laboratory center tables and teacher's table complete with accessories
- Provide adequate hangers/straps/supports on exposed pipes.
- Existing and usable laboratory faucets shall be used, defective/damaged or non-functional faucets shall be replaced.
- Provision for labatory emergency eyewash with washer and fumehood shall be provided.
- Before turn-over, water leak test shall be required.

GAS LINE

- Use schedule 40, GI pipes shall be used with sizes as indicated in the plan. Pipes to be used shall be painted with epoxy paint and with leak sealant on all joints.
- Provide adequate hangers/straps/supports on exposed pipes.
- Existing and usable laboratory gass valves faucets shall be used, defective/damaged or non-functional faucets shall be replaced.
- Before turn-over, the contractor shall require to perform a pressure test with the presence of the CDMO/end-user representatives.

LABORATORY TABLES (Center,Side & Teacher's tables)

- Frame: use 1.50mmthk GI tubing with sizes as indicated in the plan and finished/painted with epoxy paint (1 coat primer and 2 coat epoxy enamel).
- Tabletop: use 3/4" thk granite slab, Absolute Black, with bullnose, present samples for approval of the end user.
- Cabinet doors, exterior/outer sidings and elect./water/gas box: 15 mm thk Woodtech laminated Marine Plywood shall be used or approved equivalent, present samples for end-user's approval.
- Shelves/interior partitions : use 3/4"thk marine plywood painted with enamel paint.
- 0.046mW x 0.56mL (inside dimension) or same dimension with the existing, Deep Sink, fiberglass with Gooseneck Faucet and other necessary necessary accessories for installation.
- For cabinet doors, provide holes/opening with aluminum grill/expanded wire as indicated in the approved plan
- Other specifications please refer to approved plan and estimate

ELECTRICAL WORKS GENERAL SPECIFICATION

Nature of work shall be 230V, 3-phase, 60Hz, line to line connection

All materials must be new and high quality standard that passed the UL or PS.

Use 3C-100 sq.mm THW copper wire for service line +1C of 30 sq.mm THW copper wire as ground

Use 75 mm uPVC electrical pipe, thickwall for service line

Use 100 amperes MCB, 3P, 25Kaic@240V botl-on with 10 protection branches

Use 3C- 30 sq.mm THHN copper wire as main service line with 8.0 sq.mm THHN copper wire as ground

Use minimum size of 3.5 sq. mm. THHN Cu. Wire, circuit lines for lightings and convenience outlets,

use only 3.5 sq. mm THHN Cu wire for grounding of outlets.

Use 18 watts LED linear lamp, 1200mm, 1600lm/w, T8, 220-265Volts range, daylight one-end supply complete with fixtures

Special purpose outlet should be 5.5 sq.mm THHN cu.wire and provided with KSB circuit breaker with ground connected

All switches must be new, Flush type, 15A Panasonic, wide series or approved quality.

Use only uPVC Electrical pipe thickwall, atlanta or approved equal quality.

Use Universal Duplex Convenience Outlet, 3-prong, (w/grounding) wide series Panasonic or

approved quality for all wall and counter top located outlets.

All outlets (DCO, Special outlets, ACU and metal boxes) must be ground connected.

Use Universal Duplex Convenience Outlet, 3-prong, (w/grounding) wide series Panasonic or

approved quality for all wall and counter top located outlets.

All switches to be used must be wide series, panasonic or approved equal quality

All groundings should be connected to grounding system of the building

All electrical conduit must be uPVC, Thickwall, Atlanta or approved equal quality

Connection of service line must be connected to power source for chemistry

All works must be embedded in walls and ceilings.

Meager/insulation test is required, (witness by CDMO engineers) with two (2) Mega Ohms min.

Ground Test must be done with 5 ohms maximum witness by CDMO Engineers.

All connections & splicing shall be made and provided with proper connector and pull box w/ cover.

All existing materials/pulled-out must be turned- over to CDMO office.

All works shall be done in good workmanship and be place in proper places with the guidance of

CDMO Engineers and Architects.

All works shall be done in accordance with the latest edition of Philippine Electrical Code.

All works shall be done under direct supervision of a duly license Electrical Engineer or Registered Master Electrician.

SAFETY & HEALTH


- The contractor shall provide all necessary safety tools/gadgets/PPEs' and medicine to his working personnel, health protocol in connection with COVID-19 shall be strickly observed in the workplace.

- The contractor shall be responsible for the safety of passersby and working personnel in the workplace, appropriate early warning devices/signages shall be provided.

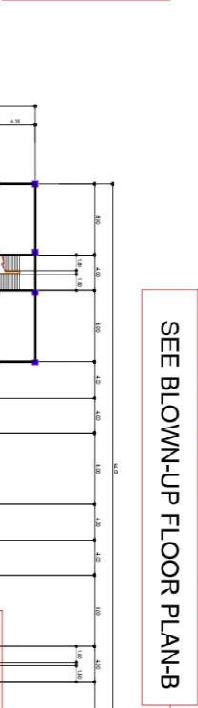
OTHER SPECIFICATIONS (as stated in the approved estimate & Plans)

Section VII. Drawings



 <p>UNIVERSITY OF THE PHILIPPINES - MANILA CO-MO COMBINATION OF MANAGEMENT OFFICE PRO-CAMPUS LIFE / MANAGLITO</p>		<p>PROJECT TITLE REHABILITATION OF THE DEPARTMENT OF CHEMISTRY TEACHING LABORATORY</p>		<p>DESIGN AND DRAWN MICHAEL T. TIGILLA <small>RESEARCHER / CIVIL</small></p>		<p>CHECKED CORRECT EDYEL M. MONTE-ERMOSO <small>PROFESSOR / CIVIL</small></p>		<p>RECOMMENDED MARIO Y. MONTANO <small>DEPT. CHIEF</small></p>		<p>GABRIELLE TROYA QUEVAS <small>SPORTS / PRO. CHIEF</small></p>		<p>FERNANDA TERRAZQUEZ <small>PRO. C.I.S</small></p>		<p>RECOMMENDING APPROVAL FRANCIS U. BASIST <small>RESEARCH / CIVIL</small></p>		<p>APPROVED CLEMENT C. CAMPOSANO <small>PRO. C.I.S</small></p>		<p>RECEIVED BY <small>Signature of the Receiver</small> AS SHOWN A 09 </p>	
--	--	--	--	---	--	--	--	---	--	---	--	---	--	---	--	---	--	---	--

SEE BLOWN-UP FLOOR PLAN-A



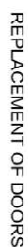
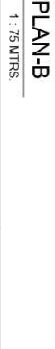
SEE BLOWN-UP FLOOR PLAN-B

10MMAS FOUNDATION BASEMENT FLOOR PLAN

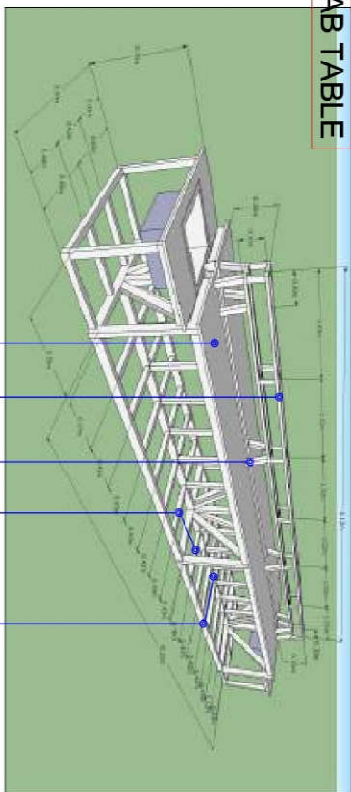
SCALE: 1:250 METERS

IONIAS PONSACIER BUILDING SECOND FLOOR PLAN

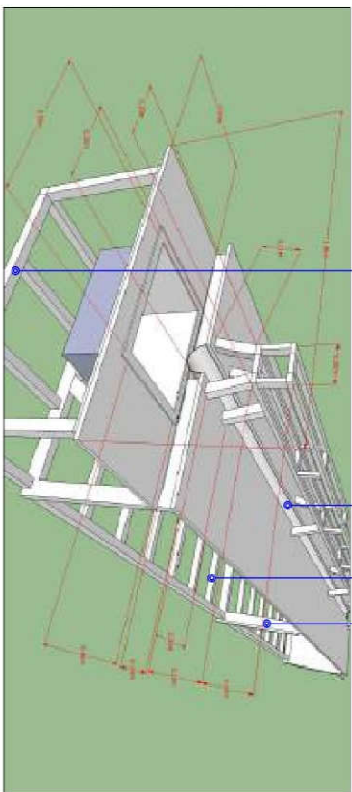
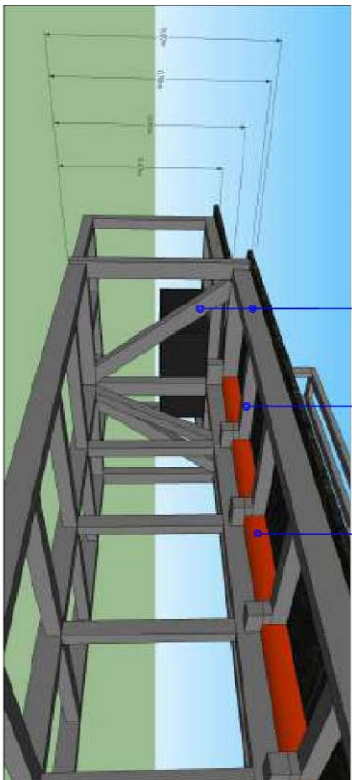
[illegible]

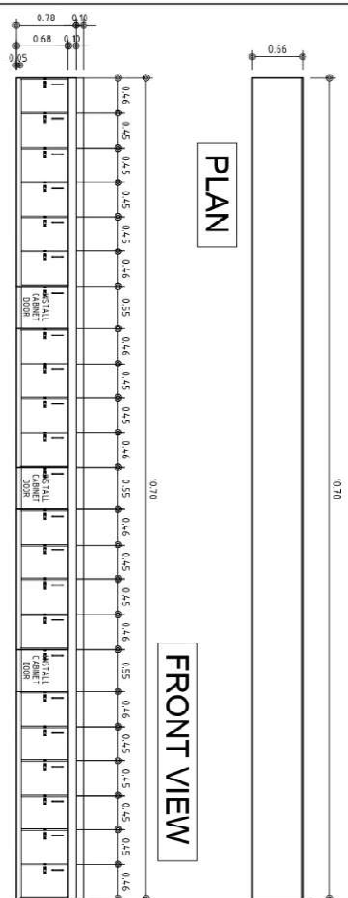


04	A
09	

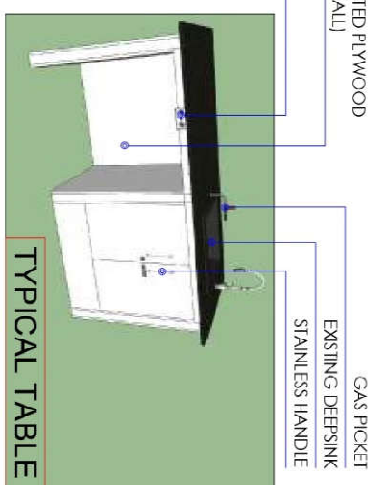
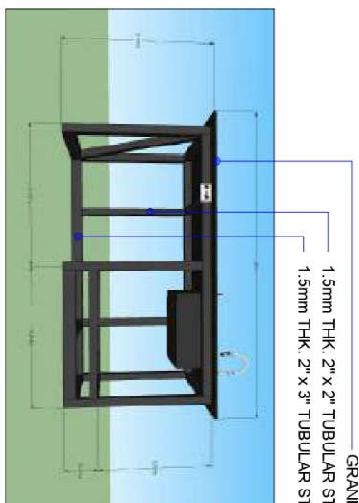
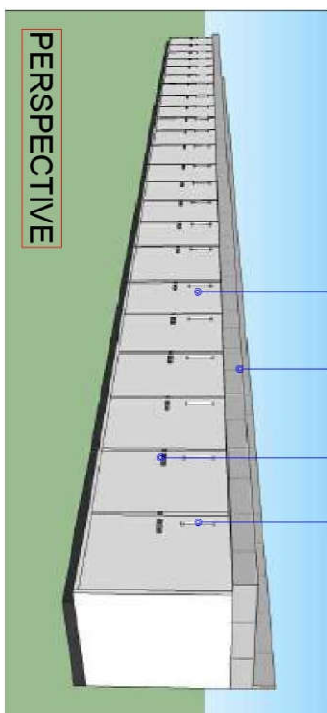
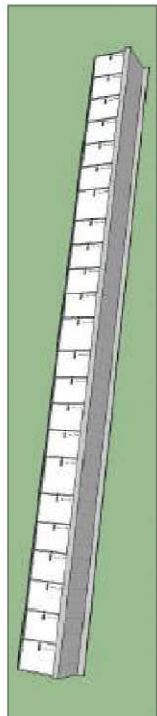


1.5mm THK, 2" x 2" TUBULAR STEEL PAINTED W/ EPOXY PAINT
1.5mm THK, 2" x 2" TUBULAR STEEL PAINTED W/ EPOXY PAINT
1.5mm THK, 2" x 2" TUBULAR STEEL PAINTED W/ EPOXY PAINT
1.5mm THK, 2" x 3" TUBULAR STEEL PAINTED W/ EPOXY PAINT
1.5mm THK, 2" x 2" TUBULAR STEEL PAINTED W/ EPOXY PAINT
6" Ø PVC PIPE SERIES 1000
1.5mm THK, 2" x 2" TUBULAR STEEL PAINTED W/ EPOXY PAINT

[illegible]

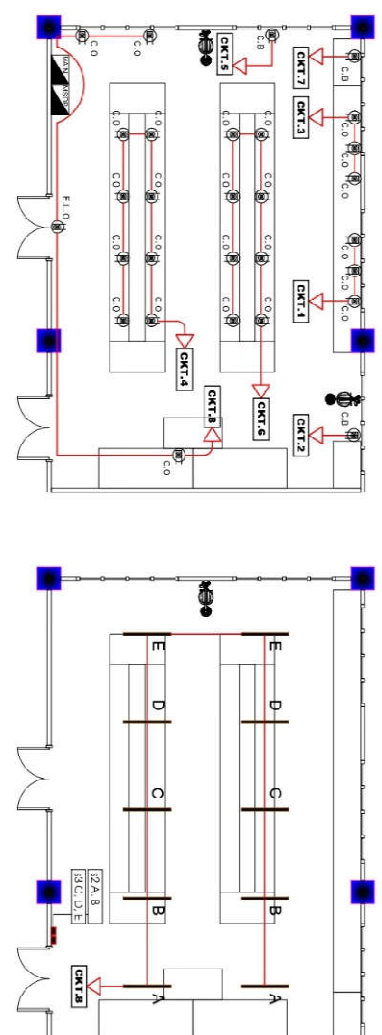


- | SPECIFICATIONS: | |
|---|---------------------------------|
| 1. REPAIR OF EXISTING LABORATORY SIDE TABLE CABINET | |
| 2. REPAIRING | |
| 3. REPAIR OF DAMAGE TILES | |
| 15mm THK. LAMINATED PLYWOOD | |
| MODULAR CABINET | |
| | 0.30m ² x 0.30m TILE |

[illegible]

LEGENDS

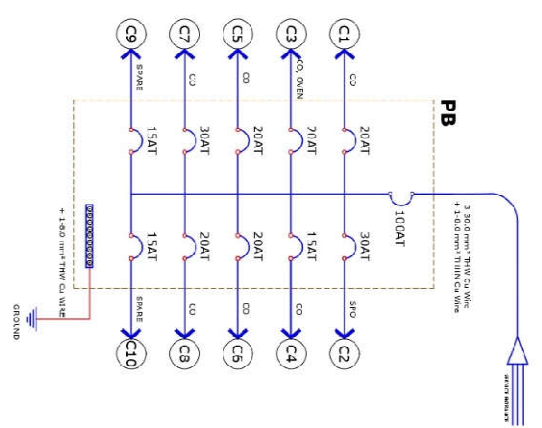
	SUBMITTANCE		EMERGENCY LIGHT OUTLET
	PANEL BOARD		FLOOR MOUNTED OUTLET
	CIRCUIT BREAKER		AIR CONDITIONING UNIT
	HVAC UNIT		FREEZER
	HVAC REFRIGERANT LINE		SINGLE POLE SWITCH
	20 AMP 120/240V SINGLE PHASE 3 WIRE TYPE LIGHTING		DUPLEX SWITCH
	12" SINGLE TYPE LIGHTING FIXTURE W/ GLASS COVER W/ 180 LUMEN WHITE CONVENIENCE OUTLET		THREE SWITCH CHANDELIER




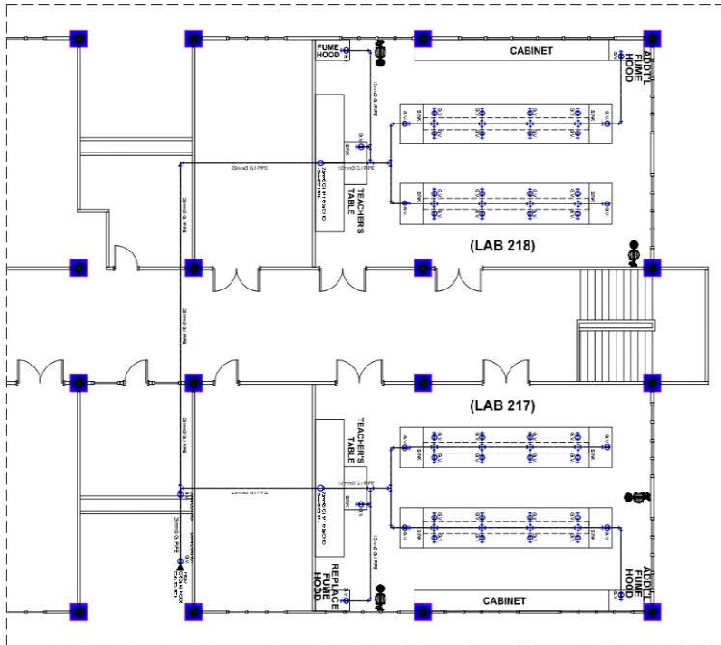
CHEMISTRY LABORATORY (LAB. 217)

SCALE:

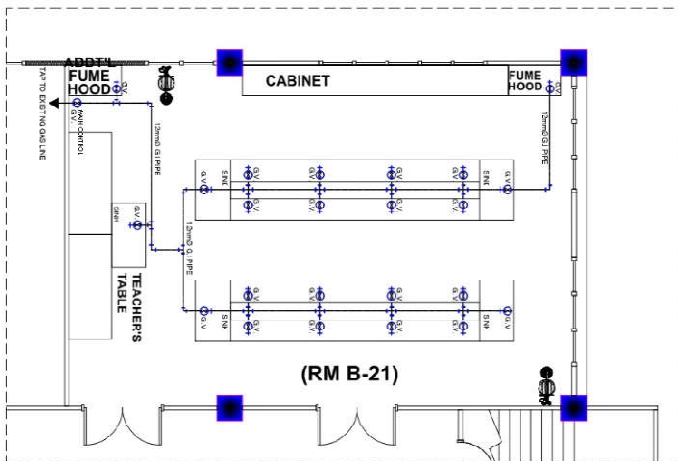
SINGLE LINE DIAGRAM



		UNIVERSITY OF THE PHILIPPINES - DILIMAN		FACULTY OF ENGINEERING		DEPARTMENT OF CHEMISTRY		LABORATORY		CHEMISTRY LABORATORY (LAB. 217)	
PROJECT TITLE		DESIGNER		CHECKED		APPROVED		DATE		PAGE	
REDESIGN OF THE DEPARTMENT OF CHEMISTRY TEACHING LABORATORY		MICHAEL F. FLORES		REYNALDO S. MONREAL		FARISAL U. BANGIT		CLEMENT O. CAMPOSANO		01	
DATE		DATE		DATE		DATE		DATE		02	



GAS LINE LAYOUT LAB 217 & 218
SCALE: 1 : 75 MTRS.



GAS LINE LAYOUT RM B-21
SCALE: 1 : 50 MTRS.

 UNIVERSITY OF THE PHILIPPINES - DILIMAN OFFICE OF THE CHIEF ENGINEER PRO-CONSTRUCTION MANAGEMENT	PROJECT TITLE	DESIGNED BY	CHECKED BY	RECOMMENDED	RECOMMENDED APPROVAL	APPROVED	SHEET CONTENT AS SHOWN <i>01</i>
	REHABILITATION OF THE DEPARTMENT OF CHEMISTRY LABORATORY	MICHAEL F. HOLLITA	EDEL W. MONTENEGRO	JAYRO M. MORANO	GABRIEL TROY A. CUEVAS	PEPITO W. FERNANDEZ	
	APPROVED BY ARCHITECT	APPROVED BY	APPROVED BY	APPROVED BY	APPROVED BY	APPROVED BY	

SCHEDULE OF EQUIPMENT
PUMPS

QTY	UNIT DESIGNATION	TYPE	CAPACITY (LPS)	HEAD (METERS)	DRIVE	MOTOR DATA	ELECT. CHARACTERISTICS	REMARKS
1	FP-1	CENTRIFUGAL MIXED FLOW	30.28	78.6	ELECTRIC MOTOR	HP	VOLTS PHASE CYCLE	FIRE PUMP
1	JP-1	VERTICAL PUMP	227	75.6	ELECTRIC MOTOR	3	220 3 60	JOCKEY PUMP

GENERAL NOTES

ALL INSTALLATION SHALL FOLLOW THE PERINENT NFPA - 13 STANDARDS.

IN AREAS WHERE NONE COMBUSTIBLE (ACOUSTIC TYPE OR THE LIKE) DROP CEILING INSTALLED, INSTALL PENDENT TYPE SPRINKLER HEADS WILL BE SAME TYPE OR BRAND AS WHAT HAVE BEEN.

PROVIDE PENDENT HEADS ON AREA WITH CEILING AND UPRIGHT HEADS ON AREA WITHOUT CEILING.

ALL INSTALLATION SHALL BE DONE BY GOOD STANDING CONTRACTOR TO INSURE THE WARRANTY OF THE WORK.

DISTANCE OF SPRINKLER HEAD (PENDENT OR UPRIGHT) TO (ALL) A WALL OR HIGH PARTITION MUST NOT EXCEED 2M.

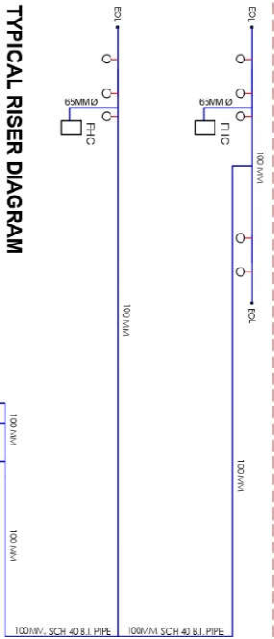
MAXIMUM COVERAGE DISTANCE OF SPRINKLER UNIT FROM THE S.A.B SHOULD BE 500 MM.

MAXIMUM COVERAGE OF ONE SPRINKLER HEAD (PENDENT OR UPRIGHT) SHALL NOT EXCEED 21.3 SQ. M (228 SQ. FT.) IN AREA (FLOOR AS CEILING OR CEILING TYPE WITH OSTRUCTION) APPROVAL.

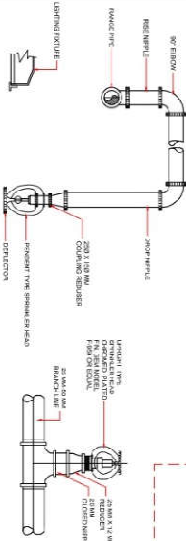
ALL FITES LINE AND FITTINGS SHALL BE 81.1 PPE SCHEDULE 40 AND TO BE SUBJECTED TO HYDROSTATIC TEST OF NOT LESS THAN 200 PSI FOR 2 HOURS.

SPRINKLER HEADS SPACED LESS THAN 1.8M (6 FT.) SHALL BE PROVIDED WITH BARRIER OF DEFLECTIONS.

TYPICAL RISER DIAGRAM

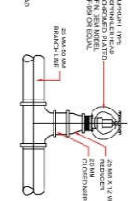


CITY TANK



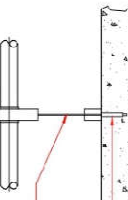
TYPICAL INSTALLATION OF PENDENT TYPE SPRINKLER HEAD

(ON AREAS WITH CEILING)

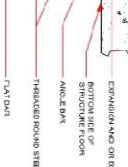
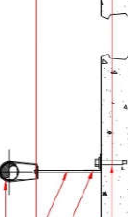


TYPICAL UPRIGHT TYPE SPRINKLER HEAD

(ON AREAS WITH CEILING)

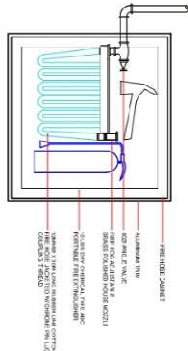


FRONT ELEVATION



DETAIL OF INSPECTOR TEST CONNECTION

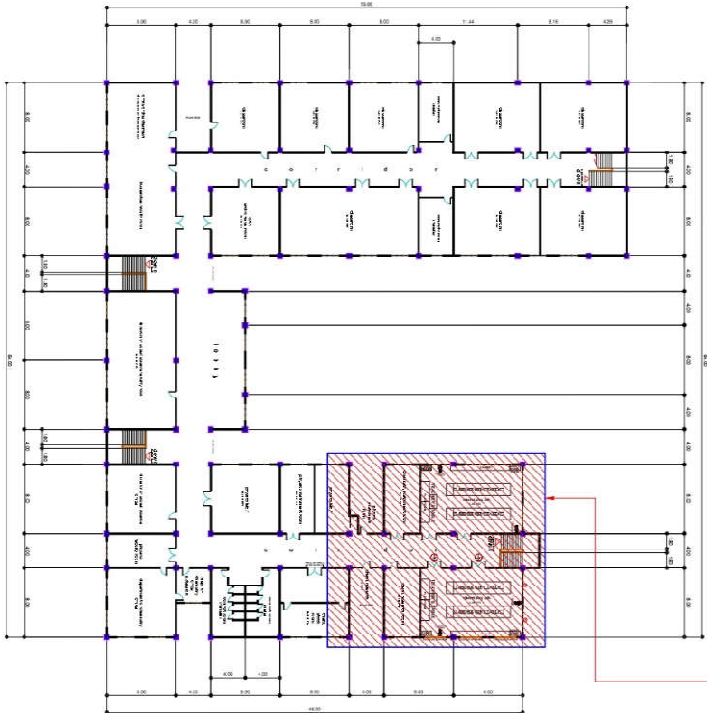
FIREHOSE CABINET DETAIL



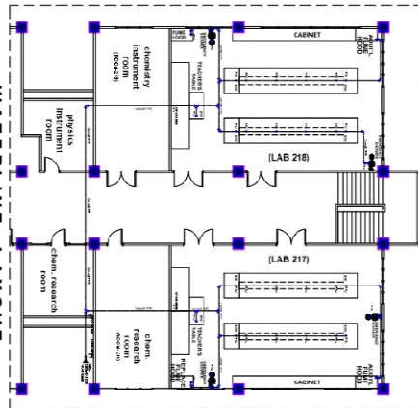
LEGEND / SYMBOL

○	PENDENT TYPE SPRINKLER HEAD
○	UPRIGHT TYPE SPRINKLER HEAD
△	WALL TYPE SPRINKLER HEAD
FHC	FIRE HOUSE CABINET
RN	RISER NIPPLE
OS & V	OS & V GATE VALVE
CV	CHECK VALVE
FDC	FIRE DEPARTMENT CONNECTION
FS	FLOW SWITCH
JP	JOCKEY PUMP
FP	FIRE PUMP
FM	FIRE HYDRANT

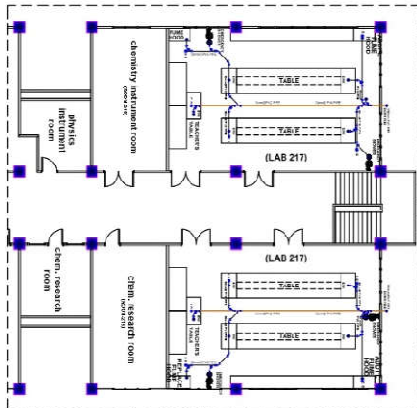
SEE BLOWN-UP FLOOR PLAN



TOMAS FONACIER BUILDING SECOND FLOOR PLAN
SCALE 1 : 250 MTRS.



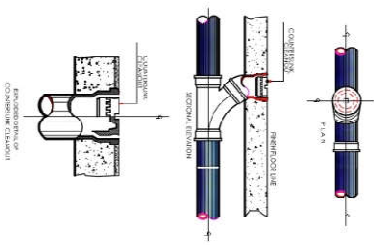
WATERLINE LAYOUT
SCALE 1 : 120 MTRS.




SANITARY LAYOUT
SCALE 1 : 120 MTRS.

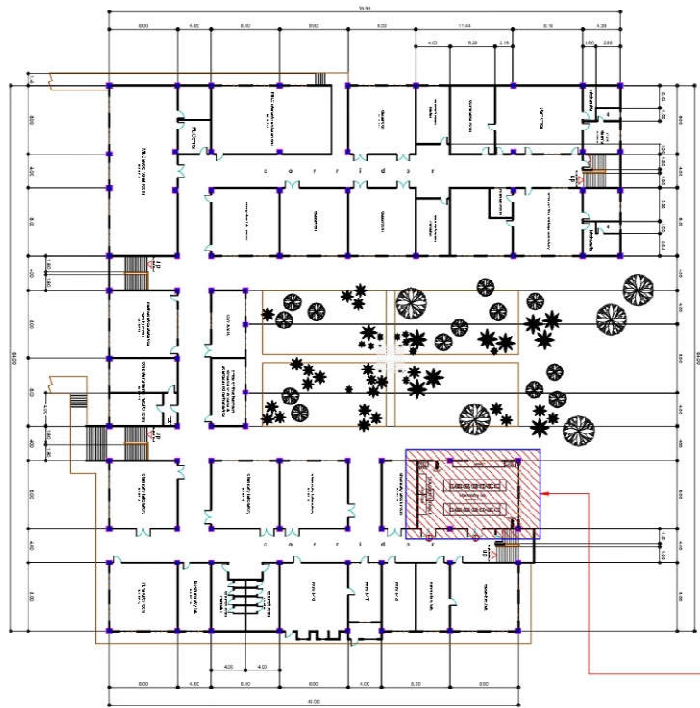
LEGEND

CO	CLEANOUT
	SANITARY LINE DOWN
	WATERLINE DOWN
	SKIN/WATER LINE DOWN
GV	SHUT VALVE
FAU	F.A.U.CET

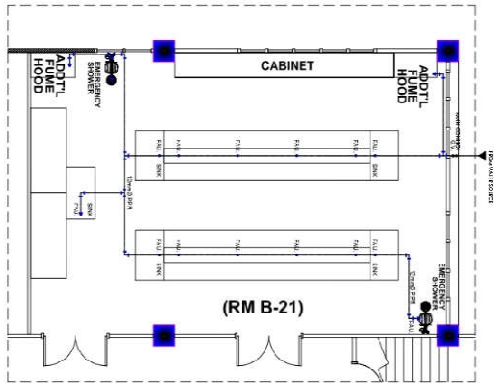


	UNIVERSITY OF THE PHILIPPINES DILIMAN OFFICE OF THE DEPARTMENT OF CHEMISTRY LABORATORY RESEARCH AND DEVELOPMENT	PROJECT TITLE	DESIGN AND DRAWING	CHECKED BY	RECOMMENDED	APPROVED	DATE OF REVIEW	REVIEWER	REVISION
			MICHAEL F. HOLLA	CHESTER E. FUNDAL	MARIO M. MORANO	GABRIELLE TROYA CUEVAS FERRON M. FERRONDEZ	FARISAL U. EACOST	CLIENT C. CAMPOSANO	
			IDENTIFICATION NO.	REVISION NO.	DATE	DATE	DATE	DATE	

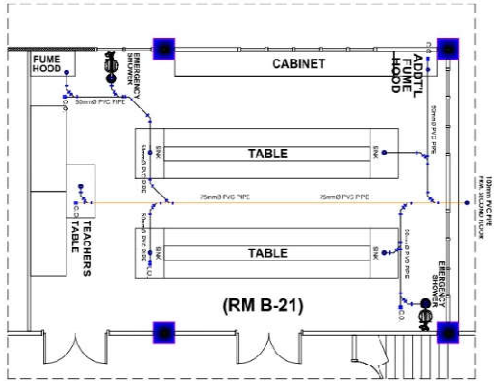
SEE BLOWN-UP FLOOR PLAN



TOMAS FONACIER BUILDING BASEMENT FLOOR PLAN
SCALE: 1:250 MTRS.

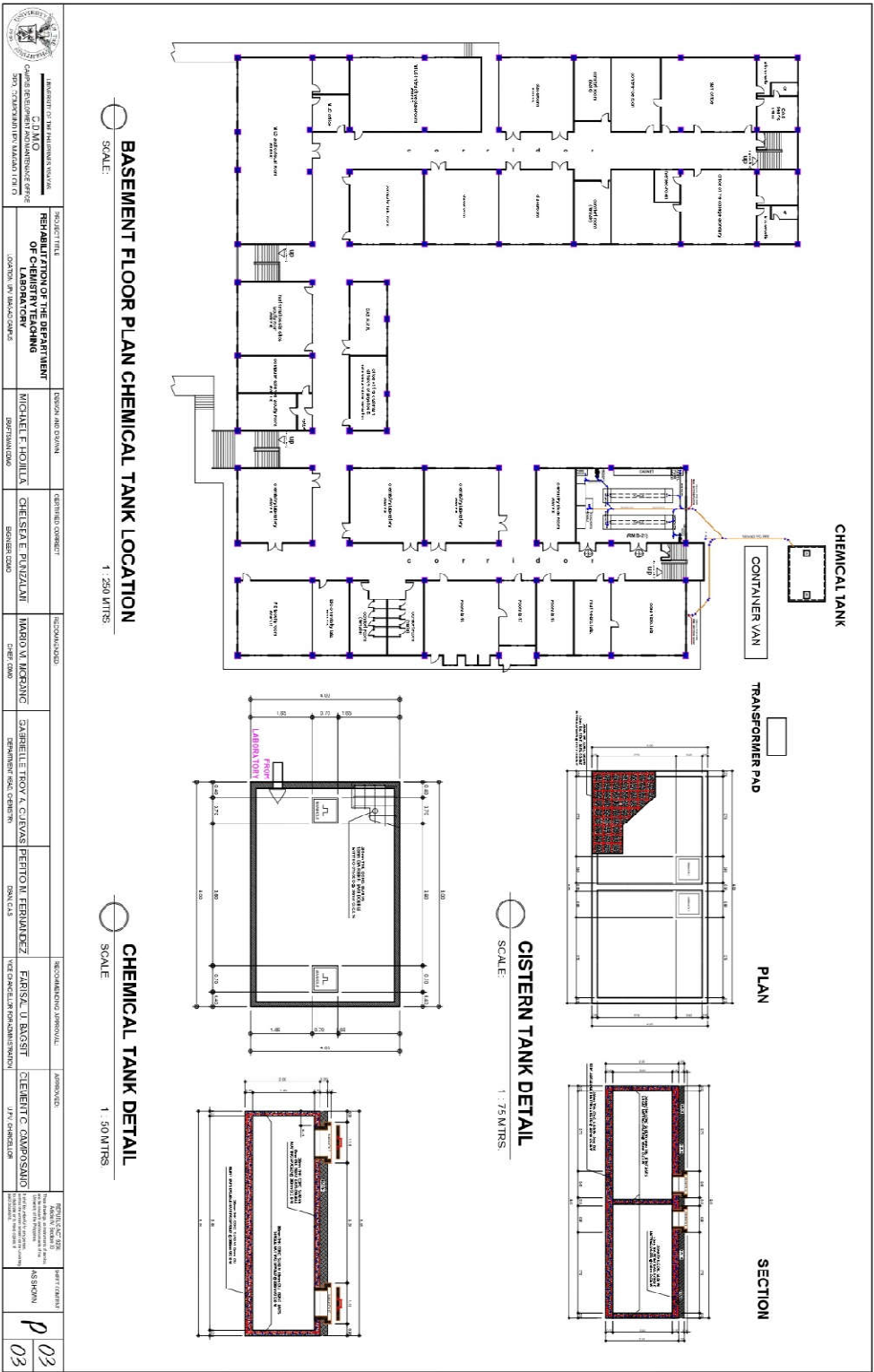


WATERLINE LAYOUT
SCALE: 1:50 MTRS.



SANITARY LAYOUT
SCALE: 1:50 MTRS.

UNIVERSITY OF REGINA UNIVERSITY OF REGINA OFFICE OF THE VICE-CHANCELLOR 100 UNIVERSITY AVENUE SASKATOON, S4S 0A2	PROJECT TITLE: REHABILITATION OF THE DEPARTMENT OF CHEMISTRY BUILDING		DESIGN AND DRAWN: MICHAEL HOLLAND		CHECKED: CHESTER PULZAN		RECOMMENDED: MARCOLOTTI		RECOMMENDING APPROVAL: JARSLU JARSLU		APPROVED: STEPHEN CAMPBELL		DATE: 14/01/2018		PROJECT NO.: 02	
	PROJECT NO.: 03		DATE: 14/01/2018		PROJECT NO.: 03		DATE: 14/01/2018		PROJECT NO.: 03		DATE: 14/01/2018		PROJECT NO.: 03		PROJECT NO.: 03	



Section VIII. Bill of Quantities

Section IX. Checklist of Technical and Financial Documents

Checklist of Technical and Financial Documents

REHABILITATION OF THE DEPARTMENT OF CHEMISTRY TEACHING

LABORATORY (ITB-2024-022)

BIDDER: _____

Date: _____

<i>Member</i>	<i>Member</i>	<i>Member</i>	<i>Vice Chair</i>	<i>Chair</i>

I. TECHNICAL COMPONENT ENVELOPE

Class “A” Documents

Legal Documents

- ☐ (a) Valid PhilGEPS Registration Certificate (Platinum Membership) in accordance with Section 8.5.2 of the IRR (Annex “A” and all its attachments must be present and valid);

Technical Documents

- ☐ (b) Statement of the prospective bidder of all its ongoing government and private contracts, including contracts awarded but not yet started, if any, whether similar or not similar in nature and complexity to the contract to be bid; **and**
- ☐ (c) Statement of the bidder’s Single Largest Completed Contract (SLCC) similar to the contract to be bid, except under conditions provided under the rules; **and**
- ☐ (d) Special PCAB License in case of Joint Ventures **and** registration for the type and cost of the contract to be bid; **and**
- ☐ (e) Original copy of Bid Security. If in the form of a Surety Bond, submit also a certification issued by the Insurance Commission **or** original copy of Notarized Bid Securing Declaration; **and**
- ☐ (f) Project Requirements, which shall include the following:
- ☐ a. Organizational chart for the contract to be bid;
 - ☐ b. List of contractor’s key personnel (e.g., Project Manager, Project Engineers, Materials Engineers, and Foremen), to be assigned to the contract to be bid, with their complete qualification and experience

- data;
- ☐ c. List of contractor's major equipment units, which are owned, leased, and/or under purchase agreements, supported by proof of ownership or certification of availability of equipment from the equipment lessor/vendor for the duration of the project, as the case may be; **and**
- ☐ (g) Original duly signed Omnibus Sworn Statement (OSS) **and** if applicable, Original Notarized Secretary's Certificate in case of a corporation, partnership, or cooperative; or Original Special Power of Attorney of all members of the joint venture giving full power and authority to its officer to sign the OSS and do acts to represent the Bidder.

Financial Documents

- ☐ (h) The prospective bidder's computation of Net Financial Contracting Capacity (NFCC).

Class "B" Documents

- ☐ (i) If applicable, duly signed joint venture agreement (JVA) in accordance with RA No. 4566 and its IRR in case the joint venture is already in existence **or** duly notarized statements from all the potential joint venture partners stating that they will enter into and abide by the provisions of the JVA in the instance that the bid is successful.

Remarks: () **Complying** () **Non Complying**

II. FINANCIAL COMPONENT ENVELOPE

- ☐ (j) Original of duly signed and accomplished Financial Bid Form; **and**

Other documentary requirements under RA No. 9184

- ☐ (k) Original of duly signed Bid Prices in the Bill of Quantities; **and**
- ☐ (l) Duly accomplished Detailed Estimates Form, including a summary sheet indicating the unit prices of construction materials, labor rates, and equipment rentals used in coming up with the Bid; **and**
- ☐ (m) Cash Flow by Quarter.

Remarks: () **Complying** () **Non Complying**

Statement identifying the Bidder's Single Largest Completed Contract similar in nature within the relevant period of five (5) years as provided in the bidding documents

Contract to be Bid: REHABILITATION OF THE DEPARTMENT OF CHEMISTRY TEACHING
LABORATORY (ITB-2024-022)

Business Name :

Business Address: _____

Name of Client	a. Owner's Name b. Address c. Telephone Nos.	Title of the Project in the Contract	Nature of Work	a. Date Awarded b. Contract Effectivity c. Date Completed	Contractor's Role (whether sole contractor, subcontractor, or partner in a JV)		a. Total Contract Value at Award b. Total Contract Value at Completion c. Contract Duration
<u>Government</u>					Description	%	
<u>Private</u>							

Note: This statement shall be supported with:

1. Notice of Award and/or Contract
2. Notice to Proceed issued by the Owner
3. Owner's Certificate of Final Acceptance, Certificate of Completion, or Inspection and Acceptance Report
4. Constructors Performance Evaluation Summary (CPES) Final Rating, which must be satisfactory, if applicable

Submitted by : _____

(Print Name and Signature)

Designation : _____

Date _____ :

Statement identifying the Bidder's Single Largest Completed Contract similar in nature within the relevant period of five (5) years as provided in the bidding documents

Contract to be Bid: REHABILITATION OF THE DEPARTMENT OF CHEMISTRY TEACHING
LABORATORY (ITB-2024-022)

Business Name : _____

Business Address: _____

[illegible]

Note: This statement shall be supported with:

1. Notice of Award and/or Contract
2. Notice to Proceed issued by the Owner
3. Owner's Certificate of Final Acceptance, Certificate of Completion, or Inspection and Acceptance Report
4. Constructors Performance Evaluation Summary (CPES) Final Rating, which must be satisfactory, if applicable

Submitted by : _____
(Print Name and Signature)

Designation : _____

Date : _____

Bid Form for the Procurement of Infrastructure Projects
[shall be submitted with the Bid]

BID FORM

Date : _____

Project Identification No. : _____

To: UNIVERSITY OF THE PHILIPPINES VISAYAS

Having examined the Philippine Bidding Documents (PBDs) including the Supplemental or Bid Bulletin Numbers *[insert numbers]*, the receipt of which is hereby duly acknowledged, we, the undersigned, declare that:

- a. We have no reservation to the PBDs, including the Supplemental or Bid Bulletins, for the Procurement Project: REHABILITATION OF THE DEPARTMENT OF CHEMISTRY TEACHING LABORATORY (ITB-2024-022);
- b. We offer to execute the Works for this Contract in accordance with the PBDs;
- c. The total price of our Bid in words and figures, excluding any discounts offered below is: *[insert information]*;
- d. The discounts offered and the methodology for their application are: *[insert information]*;
- e. The total bid price includes the cost of all taxes, such as, but not limited to: *[specify the applicable taxes, e.g. (i) value added tax (VAT), (ii) income tax, (iii) local taxes, and (iv) other fiscal levies and duties]*, which are itemized herein and reflected in the detailed estimates,
- f. Our Bid shall be valid within the period stated in the PBDs, and it shall remain binding upon us at any time before the expiration of that period;
- g. If our Bid is accepted, we commit to obtain a Performance Security in the amount of *[insert percentage amount]* percent of the Contract Price for the due performance of the Contract, or a Performance Securing Declaration in lieu of the allowable forms of Performance Security, subject to the terms and conditions of issued GPPB guidelines² for this purpose;
- h. We are not participating, as Bidders, in more than one Bid in this bidding process, other than alternative offers in accordance with the Bidding Documents;
- i. We understand that this Bid, together with your written acceptance thereof included in your notification of award, shall constitute a binding contract between us, until a formal Contract is prepared and executed; and

² currently based on GPPB Resolution No. 09-2020

- j. We understand that you are not bound to accept the Lowest Calculated Bid or any other Bid that you may receive.
- k. We likewise certify/confirm that the undersigned, is the duly authorized representative of the bidder, and granted full power and authority to do, execute and perform any and all acts necessary to participate, submit the bid, and to sign and execute the ensuing contract for the REHABILITATION OF THE DEPARTMENT OF CHEMISTRY TEACHING LABORATORY (ITB-2024-022) of the *UNIVERSITY OF THE PHILIPPINES VISAYAS*.
- l. We acknowledge that failure to sign each and every page of this Bid Form, including the Bill of Quantities, shall be a ground for the rejection of our bid.

Name: _____

Legal Capacity: _____

Signature: _____

Duly authorized to sign the Bid for and behalf of: _____

Date: _____

Bid Securing Declaration Form

[shall be submitted with the Bid if bidder opts to provide this form of bid security]

REPUBLIC OF THE PHILIPPINES)

CITY OF _____) S.S.

BID SECURING DECLARATION

Project Identification No.: REHABILITATION OF THE DEPARTMENT OF CHEMISTRY TEACHING LABORATORY (ITB-2024-022)

To: **UNIVERSITY OF THE PHILIPPINES VISAYAS**
Miagao, Iloilo

I/We, the undersigned, declare that:

1. I/We understand that, according to your conditions, bids must be supported by a Bid Security, which may be in the form of a Bid Securing Declaration.
2. I/We accept that: (a) I/we will be automatically disqualified from bidding for any procurement contract with any procuring entity for a period of two (2) years upon receipt of your Blacklisting Order; and, (b) I/we will pay the applicable fine provided under Section 6 of the Guidelines on the Use of Bid Securing Declaration, within fifteen (15) days from receipt of the written demand by the procuring entity for the commission of acts resulting to the enforcement of the bid securing declaration under Sections 23.1(b), 34.2, 40.1 and 69.1, except 69.1(f), of the IRR of RA No. 9184; without prejudice to other legal action the government may undertake.
3. I/We understand that this Bid Securing Declaration shall cease to be valid on the following circumstances:
 - a. Upon expiration of the bid validity period, or any extension thereof pursuant to your request;
 - b. I am/we are declared ineligible or post-disqualified upon receipt of your notice to such effect, and (i) I/we failed to timely file a request for reconsideration or (ii) I/we filed a waiver to avail of said right; and
 - c. I am/we are declared the bidder with the Lowest Calculated Responsive Bid, and I/we have furnished the performance security and signed the Contract.

IN WITNESS WHEREOF, I/We have hereunto set my/our hand/s this ____ day of [month] [year] at [place of execution].

[Insert NAME OF BIDDER OR ITS AUTHORIZED REPRESENTATIVE]

[Insert signatory's legal capacity]

Affiant

[Jurat]

[Format shall be based on the latest Rules on Notarial Practice]

University of the Philippines
Diliman Quezon City

QUESTIONNAIRE FOR PROSPECTIVE BIDDERS
(additional requirement for eligibility)

1. Have you ever participated in any bidding in the University of the Philippines System?

Yes	No

If YES, fill up the table below. Use additional pages if necessary.

Constituent University/ UP Campus	Name of Project	Amount of Project	Duration Start/ End	Status (On-going/ completed)

2. Has your company ever been suspended or blacklisted by the University of the Philippines System?

Yes	No

If YES, fill up the table below. Use additional pages if necessary.

Constituent University/ UP Campus	Name of Project	Amount of Project	Duration Start/ End	Status (On-going/ lifted)

3. Has your company ever been suspended or blacklisted by any government agency or private company?

Yes	No

If YES, fill up the table below. Use additional pages if necessary.

Constituent University/ UP Campus	Name of Project	Amount of Project	Duration Start/ End	Status (On-going/ lifted)

4. Has there ever been any project of your company in the University of the Philippines that was terminated by Administration?

YES	NO	NA

If YES, fill up the table below. Use additional pages if necessary.

Constituent University/ UP Campus	Name of Project	Reason for termination	Date of Termination

5. Do you certify that all documents submitted by your company and personnel are authentic?

Yes	No

6. Is there any pending investigation and/or case filed against your company or your personnel to any court or any similar institutions in relation to any government contracts awarded to your company? In relation to practice of profession of any personnel?

Yes	No

If YES, fill up the table below. Use additional pages if necessary.

For Company

Case Filed	Where Filed	Data Filed	Status (On-going/ resolved)	Remarks

For Personnel

Name of Personnel & Designation	Case Filed	Where Filed	Data Filed	Status (On-going/ resolved)	Remarks

I hereby certify that all statements and information provided herein are complete, true and correct.

Name & Signature of Bidder's: _____

Authorized Representative: _____

Official Designation: _____

Company: _____

Date: _____

ACKNOWLEDGEMENT

SUBSCRIBED AND SWORN to before me this _____ day of

_____, 2023, affiant exhibited to me his/her Community Tax Certificate No.
_____ issued _____ on _____
at _____, Philippines.

Notary Public
Until 31 December 2023
PTR No. : _____
Issued at : _____
Issued on: _____
TIN No. : _____

Doc. No. _____
Page No. _____
Book No. _____
Series of _____



UNIVERSITY OF THE PHILIPPINES VISAYAS

BIDS AND AWARDS COMMITTEE

Miagao, Iloilo, Philippines 5023
Telephone/Telefax Nos. (033)3159858 (SITELCO)
email:spso@upv.edu.ph

CERTIFICATE OF SITE INSPECTION

This is to certify that _____ a representative
of has conducted a site inspection on the project:

**REHABILITATION OF THE DEPARTMENT OF CHEMISTRY TEACHING
LABORATORY (ITB-2024-022)**

This certification is issued in connection for the bidding scheduled on 9:00AM, 22 November
2024.

UPV AUTHORIZED REPRESENTATIVE

Date: _____

DETAILED ESTIMATES

NAME OF PROJECT: REHABILITATION OF THE DEPARTMENT OF CHEMISTRY TEACHING LABORATORY
CONTRACT DURATION: 107 CD

QTY	UNIT	DESCRIPTION	UNIT COST	TOTAL COST
I. General Requirements				
I.a. Temporary Facilities				
1	lot	Temporary bunkhouse for working personnel		
1	lot	Fence/Enclosure		
		Sub-total I.a	Php	0.00
I.b. Safety and Health				
1	lot	Early warning devices/signages.		
1	lot	PPE's, Alcohol, Facemask, etc...		
		Sub-total I.b	Php	-
I.c. Electricity and Water Consumption				
1	lot	Electric & Water Meter		
1	lot	Electricity Consumption		
1	lot	Water Consumption (aver. 20 personnel per day)		
		Sub-total I.c	Php	
I.d. Mobilization and Demobilization				
1	lot	Mobilization and Demobilization		
		Sub-total I.d	Php	-
		SUB - TOTAL I	PHP	-
II Chemistry Lab. (Room B-21)				
II.a. Site Preparation, Demolition of existing center/side laboratory tables, Demolition of existing floor, removal of existing doors, transfer of affected display cabinets and disposal of debris to the designated dumping site & Lay-out				
	Man Power	No. of Persons	No. of Days	Wage/Day
	Carpenter			-
	Laborer			-
				Labor Cost
				-
	Equipment:	Unit /s	No. of days	Rate/day
	Concrete Jack Hammer			Amount
				-
				Cost of Rental
				-

				Sub-total II.a		Php	-
II.b	Concreting of floor						
	bags	Portland Cement					-
	cu.m.	Sand					-
	cu.m.	Gravel					-
	cu.m.	Filling Materials (Sand & Gravel)					-
	lgth	10mmΦ x 6.0m RSB					-
	kgs	#16 Tie Wire					-
	lot	Batter Board					-
						Cost of Materials	-
		Man Power	No. of Persons	No. of Days	Wage/Day		
		Foreman					-
		Mason/Steelman					-
		Laborer					-
						Labor Cost	-
		Equipment:	Unit /s	No. of days	Rate/day	Amount	
		Plate Compactor					-
		Concrete Mixer (1 bagger)					-
						Equipment Cost	-
				Sub-total II.b.		Php	-
II.c.	Painting of floor						
Surface Preparation							
		Man Power	No. of Persons	No. of Days	Wage/Day		
		Laborer					-
						Labor Cost	-
Painting Work							
	cans	Eposeal (4 liters)					-
	cans	Epopatch (4 liters)					-
	cans	Powerfloor (4 liters)					-
	cans	Epoxy Reducer					-
	l.f.	#100 Sandpaper					-
	shts	#120 Sandpaper					-

					Labor Cost	-
					Php	-
				Sub-total II.e.		-
II.f. Plumbing (Sanitary & Water Lines)						
Sanitary						
lgth	75mmΦ x 3.0m PVC Sanitary Pipe, S-1000					-
lgth	50mmΦ x 3.0m PVC Sanitary Pipe, S-1000					-
pcs	75mmΦ x 50mmΦ Sanitary Wye Reducer					-
pcs	75mmΦ x 45° Sanitary Elbow					-
pcs	75mmΦ x Sanitary Clean Out					-
pcs	50mmΦ x 45° Sanitary Elbow					-
pcs	50mmΦ x 90° Sanitary Elbow					-
pcs	50mmΦ Sanitary P-Trap					-
pcs	50mmΦ Sanitary Clean Out					-
pcs	4" x 4" PVC Floor Drain					-
cans	400cc PVC Solvent Cement					-
Water Line						
lgth	12mmΦ x 6.0m GI Pipe Sch.40					-
pcs	12mmΦ x 90° GI Elbow					-
lgth	12mmΦ x 4.0m PPR Pipe, PN20					-
pcs	12mmΦ PPR Cross Tee					-
pcs	12mmΦ x 90° PPR One Side Threaded Tee					-
pcs	12mmΦ x 90° PPR One Side Threaded Elbow					-
pcs	12mmΦ x 90° PPR Plain Elbow					-
pcs	12mmΦ PPR Gate Valve					-
pcs	12mmΦ PPR Union Patente					-
unit	0.46mW x 0.56mL (inside dimension), Deep Sink, Fiberglass with Gooseneck Faucet and complete accessories					-
rolls	3/4" Teplon Tape					-
liter	All Purpose Epoxy					-
pcs	Hacksaw Blade					-
lot	Faucets					-
					Material Cost	
	Description	No. of Persons	No. of Days	Wage/Day	Amount	
	Plumber					-
	Laborer					-

				Labor Cost	-
				Php	-
		Sub-total II.f.			-
II.g. Gas Line					
lgth	12mmΦ x 6.0m GI Pipe Sch.40				-
pcs	12mmΦ x 6m GI Coupling, Sch.40				-
pcs	12mmΦx 90° GI Elbow				-
pcs	12mmΦ GI Cross Tee, Sch.40				-
pcs	12mmΦ GI Tee, Sch.40				-
pcs	12mmΦ Gate Valve, KITZ				-
pcs	12mmΦ Union Patente, Brass Seat				-
rolls	3/4" Teplon Tape				-
liter	All Purpose Epoxy				-
gal	Epoxy Paint				-
pcs	Hacksaw Blade				-
lot	Gas Faucets/Valves				-
				Material Cost	
		Description	No. of Persons	No. of Days	Wage/Day
					Amount
		Plumber			-
		Laborer			-
				Labor Cost	-
				Php	-
		Sub-total II.g.			-
II.h. Fabrication and installation blackboards (1 unit)					
Removal of existing blackboard					
		Description	No. of Persons	No. of Days	Wage/Day
					Amount
		Carpenter			-
		Laborer			-
				Labor Cost	-
Fabrication and installation blackboards (1 unit)					
shts	1/4" x 4' x 8' Marine Plywood, Santa Clara				-
lgth	1" x 2" x 8' S4S Lumber				-
lgth	2" x 4" x 8' S4S Lumber				-
lgth	1" x 4" x 10' S2S Lumber				-
shts	1/2" x 4' x 8' Marine Plywood, Santa Clara				-

shts	4' x 8' White Formica				-
bottles	Contact Cement				-
lot	Sliding & Other Accessories (for white board)				-
lgth	3/4" x 10' Quarter Round Moulding				-
pcs	3/8" x 3" Lag Screw w/ Expansion Shield				-
kl	Assorted Finishing Nails				-
gal	Flatwall Enamel Paint				-
gal	Slating Paint				-
gal	Quick Dry Enamel Paint				-
gal	Paint Thinner				-
liter	Plasolux Glazing Putty				-
lf	#100 Sandpaper				-
shts	#120 Sandpaper				-
pc	Baby Paint Roller				-
pc	2" Paint Brush				-
					Material Cost
	Description	No. of Persons	No. of Days	Wage/Day	
	Carpenter/Painter				-
	Laborer				-
					Labor Cost
					Sub-total II.h.
					Php
					-

II.i. Construction of new two (2) units center laboratory table

sq.m.	3/4" x 0.64mW Granite Slab, Absolute Black (to include cutting & buffing)	-
kgs	Tile Grout	-
lgth	1.50mmthk x 50mm x 75mm x 6.0m GI Rectangular Tubing	-
lgth	1.50mmthk x 50mm x 50mm x 6.0m GI Rectangular Tubing	-
kgs	Welding Electrodes	-
pcs	Hacksaw Blade	-
pcs	Sanding Disc	-
shts	#100 Sandpaper	-
shts	#120 Sandpaper	-
shts	#150 Sandpaper	-

can	4 Liters All Purpose Epoxy Adhesive	-
gals	Epoxy Primer	-
gals	Epoxy Enamel Paint	-
gals	Epoxy Reducer	-
pcs	2" Paint Brush	-
lgth	6" x 10' PVC Sanitary Pipe Series 1000	-
shts	15 mmthk x 1.20m x 2.40m Laminated Marine Plywwod, Woodtech	-
shts	3/4" x 4' x 8' Marine Plywood	-
lgth	8' Lattice Moulding	-
mtrs	PVC Edging	-
liters	Wood Glue	-
pairs	Cabinet Door Concealed Hinges	-
pcs	Cabinet Door Handle	-
kgs	1" Finishing Nails	-
kg	2" Finishing Nails	-
kls	Patching Compound	-
gal	Flatwall Enamel Paint	-
gals	Quick Dry Enamel Paint	-
gal	Paint Thinner	-
can	1/4 Liter Oil Tinting Color	-
gal	Latex Paint	-
pcs	Baby Roller	-
pcs	2" Paint Brush	-
Gas/water/air Boxes		
lgth	1.50mmthk x 50mm x 75mm x 6.0m GI Rectangular Tubing	-
lgth	1.50mmthk x 25mm x 50mm x 6.0m GI Rectangular Tubing	-
lgth	1.50mmthk x 25mm x 25mm x 6.0m GI Rectangular Tubing	-
shts	15 mmthk x 1.20m x 2.40m Laminated Marine Plywwod, Woodtech	-
tubes	Construction Adhesive (No More Nails) Heavy Duty, 300g	-
kgs	Welding Electrodes	-
pcs	Hacksaw Blade	-
pcs	Sanding Disc	-
liter	Body Filler	-
Cost of Materials		-

		Man Power	No. of Persons	No. of Days	Wage/Day	
		Carpenter/Tile Settre/Mason				-
		Welder				-
		Painter				-
		Laborer				-
					Labor Cost	-
				Sub-total II.i.	Php	-
II.j.	Construction of one (1) unit teacher's table					
lgth	1.50mmthk x 50mm x 75mm x 6.0m GI Rectangular Tubing					-
lgth	1.50mmthk x 50mm x 50mm x 6.0m GI Rectangular Tubing					-
lgth	1/8" x 1/2" x 1/2" x 12' Aluminum Angle					-
shts	15 mmthk x 1.20m x 2.40m Laminated Marine Plywwod, Woodtech					-
pc	3/4" x 0.80m x 1.80m Granite Slab, Absolute Black (to include cutting & buffing)					-
can	4 Liters All Purpose Epoxy Adhesive					-
kgs	Welding Electrodes					-
pcs	Hacksaw Blade					-
pcs	Sanding Disc					-
shts	#100 Sandpaper					-
shts	#120 Sandpaper					-
shts	#150 Sandpaper					-
gal	Epoxy Primer					-
gal	Epoxy Enamel Paint					-
gal	Epoxy Reducer					-
pcs	2" Paint Brush					-
mtrs	PVC Edging					-
pairs	Cabinet Door Concealed Hinges					-
pcs	4" C-Type Stainless Cabinet Door Handle					-
pcs	2" Safety Hasp					-
tubes	Construction Adhesive (No More Nails) Heavy Duty, 300g					-
unit	0.46mW x 0.0.56mL (inside dimension), Deep Sink, Fiberglass with Gooseneck Faucet and complete accessories					-

		Man Power	No. of Person s	No. of Days	Cost of Materials	
					Wage/Da y	
		Welder				-
		Painter				-
		Carpenter/Gran ite Installer				-
		Laborer				-
					Labor Cost	
					Php	
				Sub-total II.j.		-
II.k.	Construction of side table					
	lgth	1.50mmthk x 50mm x 75mm x 6.0m GI Rectangular Tubing				-
	lgth	1.50mmthk x 50mm x 50mm x 6.0m GI Rectangular Tubing				-
	sq.m.	3/4" x 0.60mW Granite Slab, Absolute Black (to include cutting buffing)				-
	shts	3/4" thk x 1.20m x 2.40m Marine Plywwod				-
	shts	15 mmthk x 1.20m x 2.40m Laminated Marine Plywwod, Woodtech				-
	mtrs	PVC Edging				-
	lgth	8' Lattice Moulding				-
	can	4 Liters All Purpose Epoxy Adhesive				-
	kgs	Welding Electrodes				-
	pcs	Hacksaw Blade				-
	pcs	Sanding Disc				-
	shts	#100 Sandpaper				-
	shts	#120 Sandpaper				-
	shts	#150 Sandpaper				-
	gal	Epoxy Primer				-
	gal	Epoxy Enamel Paint				-
	gal	Epoxy Reducer				-
	gals	Flatwall Enamel Paint				-
	gals	QDE Paint, White				-
	cans	1/4 Liter Oil Tinting Color				-
	gal	Paint Thinner				-
	liter	Plasolux Glazing Putty				-
	pcs	2" Paint Brush				-
	pcs	Baby Paint Roller				-

	pairs	Concealed Hinges					-
	pcs	4" C-Type Stainless Cabinet Door Handle					-
	pcs	2" Safety Hasp					-
	kgs	Assorted Finishing Nails					-
						Cost of Materials	-
			Man Power	No. of Persons	No. of Days	Wage/Day	
			Welder				-
			Painter				-
			Carpenter/Granite Installer				-
			Laborer				-
						Labor Cost	-
					Sub-total II.k.	Php	-
II.I.	Electrical						
	sets	18 watts LED linear lamp, T8, 240V, 1200mm, 400lm/w, daylight, w/ fixtures					-
	sets	Duplex universal convenience Outlet, 3-prong, wide series, flush type, Panasonic					-
	sets	Two Gang Switch, wide series, Panasonic					-
	set	Rechargeable Twinhead Emergency Lamp, 2 heads (24 bright LED) automatically lights up during power failure, overcharge and over discharge protection circuit, built-in AC charger, battery test switch, external safety fuse, 6V, 4.5 Ah sealed lead acid battery. 220-240V AC, 60Hz.					-
	box	3.5 sq. mm. THHN Cu wire, green (ground wire)					-
	boxes	3.5 sq. mm. THHN Cu wire, (black)					-
	lengths	uPVC mouldings 1"					-
	box	to w/metal screw 5mm x 1"					-
	pcs.	uPVC switch box					-
	pcs.	uPVC Junction Box, Poly, with cover					-
	kl	#16 GI Tie/pull Wire					-
	can	Solvent Cement 100cc with brush, atlanta					-
	rolls	3M Vinyl Electrical tape					-
						Material Cost	-
			Man Power	No. of Persons	# of Days	Wage/Day	

		Electrician				-
		Laborer/Helper				-
					Labor Cost	-
				Sub-total II.I.	Php	-
				SUB - TOTAL II	PHP	-
III	Chemistry Laboratory 217 & 218					
III.a	Site Preparation, Demolition of existing ceiling, transfer of affected display cabinets and disposal of debris to the designated dumping site & Lay-out					
		Man Power	No. of Persons	No. of Days	Wage/Day	
		Foreman				-
		Carpenter				-
		Laborer				-
					Labor Cost	-
				Sub-total III.a	Php	-
III.b	Installation of new ceiling					
	shts	3.5mmthk x 4' x 8' Hardi Lite				-
	lgth	0.60mm thk x 25mm x 25mm x 2.40m Wall Angle				-
	lgth	0.60mm thk x 19mm x 50mm x 5.0m J-Furring				-
	lgth	1.0mm x 12mm x 38mm x 5.0m Carrying Channel				-
	pcs	W-Clip				-
	pcs	6mm Tox w/ Metal Screw				-
	lm	#6 Hanger Rod				-
	pcs	Drywall Screw				-
	boxes	1/8" x 1/2" Blind Revits				-
	gals	Flat Latex Paint, Boysen				-
	gals	Masonry Putty				-
	lf	#100 Sandpaper				-
	shts	#120 Sandpaper				-
	shts	#150 Sandpaper				-
	pcs	Paint Roller				-
	pcs	4" Paint Brush				-
	lot	Other Miscellaneous Materials				-
					Cost of Materials	-

		Man Power	No. of Per son s	No. of Days	Wage/Da y	
		Carpenter				-
		Laborer				-
					Labor Cost	-
				Sub- total III.b	Php	-
III.c. Repainting of interior walls						
pails	Semi-Gloss Latex Paint					-
liters	Latex Color					-
kls	Patching Compound					-
pcs	Paint Roller					-
pcs	4" Paint Brush					-
ln.ft.	#100 Sandpaper					-
shts	#120 Sandpaper					-
					Material Cost	
		Description	No. of Per son s	No. of Days	Wage/Da y	Amount
		Painter				-
		Laborer				-
					Labor Cost	-
				Sub- total III.c.	Php	-
III.d. Replacement of existing doors and fixed glass windows						
Removal of existing doors and windows						
		Man Power	No. of Per son s	No. of Days	Wage/Da y	
		Laborer				-
					Labor Cost	-
units	1.90mW x 2.10mH Double Swing Door on Aluminum Frame, Analok Finish, Clear Glass with Heavy Duty Overhead Concealed Door Closer, Handle and other necessary accessories for Installation					-
units	2.60m x 0.75m fixed Glass Window on Aluminum Frame, Analok Finished, w/ 1/4" thk Clear Glass					-
					Material Cost	-

		Description	No. of Persons	No. of Days	Wage/Day	Amount
		Glass Installer				-
		Laborer/Helper				-
					Labor Cost	-
				Sub-total III.d.	Php	-
III.e. Plumbing (Sanitary & Water Lines)						
Removal of existing sanitary and water lines						
		Description	No. of Persons	No. of Days	Wage/Day	Amount
		Plumber				-
		Laborer				-
					Labor Cost	-
Sanitary Line						
	lgth	75mmΦ x 3.0m PVC Sanitary Pipe, S-1000				-
	lgth	50mmΦ x 3.0m PVC Sanitary Pipe, S-1000				-
	pcs	75mmΦ x 50mmΦ Sanitary Wye Reducer				-
	pcs	75mmΦ x 45° Sanitary Elbow				-
	pcs	75mmΦ x Sanitary Clean Out				-
	pcs	50mmΦ x 45° Sanitary Elbow				-
	pcs	50mmΦ x 90° Sanitary Elbow				-
	pcs	50mmΦ Sanitary P-Trap				-
	pcs	50mmΦ Sanitary Clean Out				-
	pcs	4" x 4" PVC Floor Drain				-
	cans	400cc PVC Solvent Cement				-
	liters	All Purpose Epoxy				-
	lot	Hangers/Clamps, etc.....				-
Water Lines						
	lgth	12mmΦ x 6.0m GI Pipe Sch.40				-
	pcs	12mmΦ x 6m GI Coupling, Sch.40				-
	pcs	12mmΦ x 90° GI Elbow				-
	pcs	12mmΦ x 90° PPR One Side Threaded Tee				-
	lgth	12mmΦ x 4.0m PPR Pipe, PN20				-
	pcs	12mmΦ PPR Cross Tee				-
	pcs	12mmΦ x 90° PPR One Side Threaded Elbow				-
	pcs	12mmΦ x 90° PPR Plain Elbow				-

pcs	12mmΦ PPR Gate Valve	-
pcs	12mmΦ PPR Union Patente	-
unit	0.46mW x 0.56mL (inside dimension), Deep Sink, Fiberglass with Gooseneck Faucet and complete accessories	-
rolls	3/4" Teplon Tape	-
liters	All Purpose Epoxy	-
lot	Hangers/Clamps, etc.....	-
lot	Faucets	-
		Material Cost

Description	No. of Persons	No. of Days	Wage/Day	Amount
Plumber				-
				Labor Cost
				-
			Sub-total III.e.	Php
				-

III.f. Gas Lines

Removal of existing gas lines

Description	No. of Persons	No. of Days	Wage/Day	Amount
Plumber				-
Laborer				-
				Labor Cost
				-
lgth	12mmΦ x 6m GI Pipe, Sch.40			-
pcs	12mmΦ x 6m GI Coupling, Sch.40			-
pcs	12mmΦ x 90° GI Elbow, Sch.40			-
pcs	12mmΦ GI Cross Tee, Sch.40			-
pcs	12mmΦ Gate Valve, KITZ			-
pcs	12mmΦ Union Patente, Brass Seat			-
pcs	25mmΦ x 12mmΦ GI Reducer, Sch.40			-
lgth	25mmΦ x 6.0m GI Pipe, Sch.40			-
pcs	25mmΦ x 90° GI Elbow, Sch.40			-
pc	25mmΦ GI Tee, Sch.40			-
pcs	25mmΦ Gate Valve, KITZ			-

rolls	3/4" Teplon Tape				-
liter	All Purpose Epoxy				-
gal	Epoxy Paint				-
pcs	Hacksaw Blade				-
lot	Hangers/Clamp, etc.....				-
lot	Gas Faucets/Valves				-
					Material Cost
					0.00
	Description	No. of Persons	No. of Days	Wage/Daily	Amount
	Plumber				-
	Laborer				-
					Labor Cost
					-
				Sub-total III.f.	Php
					-

III.g. Fabrication and installation blackboards (2 units)
Removal of existing blackboard

	Description	No. of Persons	No. of Days	Wage/Daily	Amount
	Foreman				-
	Carpenter				-
	Laborer				-
					Labor Cost
					-

Fabrication and installation blackboards (2 units)

shts	1/4" x 4' x 8' Marine Plywood, Santa Clara				-
lgth	1" x 2" x 8' S4S Lumber				-
lgth	2" x 4" x 8' S4S Lumber				-
lgth	1" x 4" x 10' S2S Lumber				-
shts	1/2" x 4' x 8' Marine Plywood, Santa Clara				-
shts	4' x 8' White Formica				-
bottles	Contact Cement				-
lot	Sliding & Other Accessories (for white board)				-
lgth	3/4" x 10' Quarter Round Moulding				-
pcs	3/8" x 3" Lag Screw w/ Expansion Shield				-
kl	Assorted Finishing Nails				-
gal	Flatwall Enamel Paint				-
gal	Slating Paint				-

gal	Quick Dry Enamel Paint	-
gal	Paint Thinner	-
liter	Plasolux Glazing Putty	-
lf	#100 Sandpaper	-
shts	#120 Sandpaper	-
pc	Baby Paint Roller	-
pc	2" Paint Brush	-
		45.00
		Material Cost
		0.00

Description	No. of Persons	No. of Days	Wage/Day	Amount
Foreman				
Carpenter/Painter				
Laborer				
			Labor Cost	-
			Php	
		Sub-total III.g.		-

III.h. Construction of four (4) units center laboratory table

III.h.1. Demolition of existing center laboratory tables disposal of debris to the designated dumping site & Lay-out

Man Power	No. of Persons	No. of Days	Wage/Day	Amount
Foreman				-
Carpenter				-
Laborer				-
			Labor Cost	-
			Php	
		Sub-total III.h.1.		-

III.h.2. Construction of 4 units new laboratory center table.

sq.m.	3/4" x 0.64Wm Granite Slab, Absolute Black (to include cutting & buffing)	-
kgs	Tile Grout	-
lgth	1.50mmthk x 50mm x 75mm x 6.0m BI Rectangular Tubing	-
lgth	1.50mmthk x 50mm x 50mm x 6.0m GI Rectangular Tubing	-
kgs	Welding Electrodes	-
pcs	Hacksaw Blade	-
pcs	Sanding Disc	-

shts	#100 Sandpaper	-
shts	#120 Sandpaper	-
shts	#150 Sandpaper	-
can	4 Liters All Purpose Epoxy Adhesive	-
gals	Epoxy Primer	-
gals	Epoxy Enamel Paint	-
gals	Epoxy Reducer	-
pcs	2" Paint Brush	-
lgth	6" x 10' PVC Sanitary Pipe Series 1000	-
shts	15 mmthk x 1.20m x 2.40m Laminated Marine Plywwod, Woodtech	-
shts	3/4" x 4' x 8' Marine Plywood	-
lgth	8' Lattice Moulding	-
mtrs	PVC Edging	-
liters	Wood Glue	-
pairs	Cabinet Door Concealed Hinges	-
pcs	Cabinet Door Handle	-
kgs	1" Finishing Nails	-
kg	2" Finishing Nails	-
kls	Patching Compound	-
gal	Flatwall Enamel Paint	-
gals	Quick Dry Enamel Paint	-
gal	Paint Thinner	-
can	1/4 Liter Oil Tinting Color	-
gal	Latex Paint	-
pcs	Baby Roller	-
pcs	2" Paint Brush	-
lgth	1.50mmthk x 50mm x 75mm x 6.0m GI Rectangular Tubing	-
lgth	1.50mmthk x 25mm x 50mm x 6.0m G Rectangular Tubing	-
lgth	1.50mmthk x 25mm x 25mm x 6.0m GI Rectangular Tubing	-
shts	15 mmthk x 1.20m x 2.40m Laminated Marine Plywwod, Woodtech	-
tubes	Construction Adhesive (No More Nails) Heavy Duty, 300g	-
kgs	Welding Electrodes	-
pcs	Hacksaw Blade	-
pcs	Sanding Disc	-
liter	Body Filler	-

				Cost of Materials	-
	Man Power	No. of Persons	No. of Days	Wage/Day	
	Foreman				-
	Carpenter/Tile Setter/Mason				-
	Welder				-
	Painter				-
	Laborer				-
				Labor Cost	-
				Sub-total III.h.2.	Php -

III.h.3. Replace of affected Floor Tiles due to the demolition of existing laboratory table
Removal of affected floor tiles.

				Cost of Materials	-
	Man Power	No. of Persons	No. of Days	Wage/Day	
	Foreman				-
	Laborer				-
				Labor Cost	-
				Sub-total III.h.3.	Php -

				Cost of Materials	-
pcs	0.60m x 0.60m Floor Tiles				-
bags	Tile Adhesive				-
kgs	Tile Grout				-
bags	Portland Cement				-
				Cost of Materials	-
	Man Power	No. of Persons	No. of Days	Wage/Day	
	Foreman				-
	Tile Setter/Installer				-
	Laborer				-
				Labor Cost	-
				Sub-total III.h.3.	Php -

					Sub- total III.h.	Php	-
III.i.	Construction of two (2) units teacher's table						
lgth	1.50mmthk x 50mm x 75mm x 6.0m GI Rectangular Tubing						-
lgth	1.50mmthk x 50mm x 50mm x 6.0m GI Rectangular Tubing						-
lgth	1/8" x 1/2" x 1/2" x 12' Aluminum Angle						-
shts	15 mmthk x 1.20m x 2.40m Laminated Marine Plywood, Woodtech						-
pc	3/4" x 0.80m x 1.80m Granite Slab, Absolute Black (to include cutting & buffing)						-
can	4 Liters All Purpose Epoxy Adhesive						-
kgs	Welding Electrodes						-
pcs	Hacksaw Blade						-
pcs	Sanding Disc						-
shts	#100 Sandpaper						-
shts	#120 Sandpaper						-
shts	#150 Sandpaper						-
gal	Epoxy Primer						-
gal	Epoxy Enamel Paint						-
gal	Epoxy Reducer						-
pcs	2" Paint Brush						-
mtrs	PVC Edging						-
pairs	Cabinet Door Concealed Hinges						-
pcs	2" Safety Hasp						-
pcs	Cabinet Door Handle						-
tubes	Construction Adhesive (No More Nails) Heavy Duty, 300g						-
unit	0.34mW x 0.60mL (inside dimension), Deep Sink, Fiberglass with Gooseneck Faucet and complete accessories						-
						Cost of Materials	-
	Man Power	No. of Per son s	No. of Days			Wage/Da y	
	Foreman						
	Welder/Painter						
	Carpenter/Gran ite Installer						
	Laborer						
						Labor Cost	-
					Sub- total III.i.	Php	-

III.j.	Repair of side tables (Rooms 217 & 218)					
shts	3/4" x 4' x 8' Marine Plywood	-				
shts	1/4" x 4' x 8' Marine Plywood	-				
bd.ft.	S4S Good Lumber	-				
lgth	8' Lattice Moulding	-				
liters	Wood Glue	-				
pairs	Cabinet Door Hinges	-				
pcs	Cabinet Door Handle	-				
kgs	1" Finishing Nails	-				
kg	2" Finishing Nails	-				
kl	Patching Compound	-				
l.f.	#100 Sandpaper	-				
shts	#120 Sandpaper	-				
gal	Flatwall Enamel Paint	-				
gals	Quick Dry Enamel Paint	-				
gal	Paint Thinner	-				
can	1/4 Liter Oil Tinting Color	-				
pcs	Baby Roller	-				
pcs	2" Paint Brush	-				
pcs	8" x 8" Tiles, White	-				
bags	Tile Adhesive	-				
kgs	Tile Grout	-				
			Cost of Materials	Php		-
			No. of Persons	No. of Days	Wage/Daily	
	Man Power					
	Carpenter/Painter					
	Laborer					
					Labor Cost	-
			Sub-total III.j.		Php	

III.k.	Electrical		
III.k.1. Chemistry Laboratory 217			
	sets	18 watts LED linear lamp, T8, 240V, 1200mm, 400lm/w, daylight, into louver type lighting fixtures, flush type, single light bulb	-
	sets	Duplex universal convenience Outlet, 3-prong, wide series, flush type, Panasonic	-

set	Two Gang Switch, wide series, Panasonic	-
set	Three Gang Switch, wide series, Panasonic	-
set	Rechargeable Twinhead Emergency Lamp, 2 heads (24 bright LED) automatically lights up during power failure, overcharge and over discharge protection circuit, built-in AC charger, battery test switch, external safety fuse, 6V, 4.5 Ah sealed lead acid battery. 220-240V AC, 60Hz.	-
m	3.5 sq. mm. THHN Cu wire, green (ground wire)	-
boxes	3.5 sq. mm. THHN Cu wire, (black)	-
m	5.5 sq.mm THHN cu.wire	-
m	8.0 sq.mm THHN copper wire, green (ground wire)	-
m	30 sq.mm THHN copper wire	-
m	100 sq.mm THW copper wire	-
sets	30 Amperes KSB circuit breaker with housing, 2P, 240V	-
lengths	20 mm uPVC Electrical Pipe, thickwall type, atlanta	-
pcs.	20 mm uPVC Long radius elbow, atlanta	-
pcs.	20 mm uPVC adaptor with locknut	-
pcs.	20 mm uPVC pipe coupling/connector, crown	-
lengths	40 mm uPVC Electrical Pipe, thickwall type, atlanta	-
pcs.	40 mm uPVC Long radius elbow, atlanta	-
pcs.	40 mm uPVC adaptor with locknut	-
lengths	63 mm uPVC Electrical Pipe, thickwall type, atlanta	-
pcs.	63 mm uPVC Long radius elbow, atlanta	-
pcs.	63 mm uPVC adaptor with locknut	-
lengths	uPVC mouldings 1"	-
box	box w/metal screw 5mm x 1"	-
pcs.	uPVC switch box,poly	-
pcs.	Utility box	-
pcs.	uPVC Junction Box, Poly, with cover	-
pcs.	uPVC square box w/cover	-
kl	#16 GI Tie/pull Wire	-
can	Solvent Cement 100cc with brush, atlanta	-
rolls	3M Vinyl Electrical tape	-
pcs.	Two bolt type solderless connector for 250sq.mm THW copper wire	-
set	225 AT/250AF MCCB, 65KAIC@240V, 3-Phase with NEMA 1 enclosure	-
set	Molded Case Circuit Breaker, Cu bus bar, bolt-on type, 3-Phase	-

Main: 1 set -100 Amp. MCCB, 3P,25 KAIC@240V, Bolt-on, Industrial type

Branches: 6 sets - 20 Amp., 2P, Bolt-on, 240V
 2 set - 15 Amp., 2P, Bolt-on, 240V
 2 set - 30 Amp., 2P, Bolt-on, 240V

Material Cost		Php.	
			-
	Man Power	No. of Persons	
		# of Days	Wage/Day
	Electrical Leadman/Foreman		-
	Electrician		-
	Laborer/Helper		-
			Labor Cost
			-
		Sub-total III.k.1.	Php
			-

III.k.2. Chemistry Laboratory 218

sets	18 watts LED linear lamp, T8, 240V, 1200mm, 400lm/w, daylight, into louver type lighting fixtures, flush type, single light bulb	-
sets	Duplex universal convenience Outlet, 3-prong, wide series, flush type, Panasonic	-
set	Two Gang Switch, wide series, Panasonic	-
set	Three Gang Switch, wide series, Panasonic	-
set	Rechargeable Twinhead Emergency Lamp, 2 heads (24 bright LED) automatically lights up during power failure, overcharge and over discharge protection circuit, built-in AC charger, battery test switch, external safety fuse, 6V, 4.5 Ah sealed lead acid battery. 220-240V AC, 60Hz.	-
box	3.5 sq. mm. THHN Cu wire, green (ground wire)	-
boxes	3.5 sq. mm. THHN Cu wire, (black)	-
m	5.5 sq.mm THHN cu.wire	-
m	8.0 sq.mm THHN copper wire, green (ground wire)	-
m	30 sq.mm THHN copper wire	-
set	30 Amperes KSB circuit breaker with housing, 2P, 240V	-
lengths	20 mm uPVC Electrical Pipe, thickwall type, atlanta	-
pcs.	20 mm uPVC Long radius elbow, atlanta	-
pcs.	20 mm uPVC adaptor with locknut	-
pcs.	20 mm uPVC pipe coupling/connector, crown	-
lengths	40 mm uPVC Electrical Pipe, thickwall type, atlanta	-
pcs.	40 mm uPVC Long radius elbow, atlanta	-

pcs.	40 mm uPVC adaptor with locknut	-
lengths	uPVC mouldings 1"	-
box	box w/metal screw 5mm x 1"	-
pcs.	uPVC switch box	-
pcs.	Utility box	-
pcs.	uPVC Junction Box, Poly, with cover	-
pcs.	uPVC square box w/cover	-
kl	#16 GI Tie/pull Wire	-
can	Solvent Cement 100cc with brush, atlanta	-
rolls	3M Vinyl Electrical tape	-
set	Molded Case Circuit Breaker, Cu bus bar, bolt-on type, 3-Phase	-

Main: 1 set -100 Amp. MCCB, 3P,25 KAIC@240V, Bolt-on, Industrial type

Branches: 6 sets - 20 Amp., 2P, Bolt-on, 240V
2 set - 15 Amp., 2P, Bolt-on, 240V
2 set - 30 Amp., 2P, Bolt-on, 240V

Material Cost				Php.	-
	Man Power	No. of Persons	# of Days	Wage/Day	
	Electrical Leadman/Foreman				-
	Electrician				-
	Laborer/Helper				-
				Labor Cost	-
			Sub-total III.k.2.	Php	-
			Sub-total III.k.	Php	-
			SUB - TOTAL III	PHP	-

GRAND TOTAL (Direct Cost)

Submitted by:

Name of the Representative of the Bidder

Date: _____

Position

Signature of the
Bidder

NAME OF PROJECT: REHABILITATION OF THE DEPARTMENT OF CHEMISTRY TEACHING LABORATORY
CONTRACT DURATION: 107 CD

SUMMARY OF THE DETAILED ESTIMATE/COST OF MATERIALS

ITEM NO.	DESCRIPTION			QTY.	UNIT	ESTIMATED DIRECT COST (EDC)	MARK-UPS IN PERCENT		TOTAL MARK-UP		VAT	TOTAL INDIRECT COST	TOTAL COST	UNIT COST
							OCM	PROFIT	%	VALUE				
I	General Requirements													
I.a	Temporary Facilities			1	lot									
I.b	Safety and Health			1	lot									
I.c	Electricity and Water Consumption			1	lot									
I.d	Mobilization and Demobilization			1	lot									
SUB-TOTAL I														
II	Chemistry Lab. (Room B-21)													
II.a.	Site Preparation, Demolition of existing center/side laboratory tables, Demolition of existing floor, removal of existing doors, transfer of affected display cabinets and disposal of debris to the designated dumping site & Lay-out			1	lot									
II.b.	Concreting of floor			1	lot									
II.c.	Paintiing of floor			1	lot									
II.d.	Repair and Repainting of interior walls and ceiling			1	lot									

II.e.	Replacement of existing doors	1	lot									
II.f.	Plumbing (Sanitary & Water Lines)	1	lot									
II.g.	Gas line	1	lot									
II.h.	Fabrication and installation of one (1) unit blackboard	1	unit									
II.i.	Construction of two (2) units new laboratory center table.	2	units									
II.j.	Construction of one (1) unit teacher's table	1	unit									
II.k.	Construction of side table	1	unit									
II.l.	Electrical	1	lot									
SUB-TOTAL II												

III	Chemistry Laboratory 217 & 218											
III.a.	Site Preparation, Demolition of existing center laboratory tables and ceiling, transfer of affected display cabinets and disposal of debris to the designated dumping site & Lay-out	1	lot									
III.b.	Installation new of ceiling	1	lot									
III.c.	Repair and repainting of walls	1	lot									
III.d.	Replacement of existing doors and fixed glass windows	1	lot									
III.e.	Plumbing (Sanitary & Water Lines)	1	lot									
III.f.	Gas line	1	lot									
III.g.	Fabrication and installation of two (2) units blackboards (for Lab 217 & 218)	2	units									

III.h.	Construction of new four (4) units center laboratory table (2 units for Lab 217 & 2 units for Lab 218 218)	4	units									
III.i.	Construction of two (2) units teacher's table (for Lab 217 & 218)	2	units									
III.j.	Repair of side tables (for Lab 217 & 218)	2	units									
III.k.	Electrical	1	lot									
SUB-TOTAL III												
Sub-Total (Approved Budget for the Contract "ABC")											-	
Total Project Cost												-

Note: Estimates should be consistent with DPWH DO No. 197 Series of 2016 (Revised Guidelines in the Preparation of Approved Budget of the Contract), including related updates.

Submitted by:

Name of the Representative of the Bidder

Date: _____

Position

Signature of the Bidder

BILL OF QUANTITIES

Name of Project: REHABILITATION OF THE DEPARTMENT OF CHEMISTRY TEACHING LABORATORY, CAS Bldg., U.P. Visayas, Miagao Campus

Contract Duration: 107 CD

ITEM NO.	DESCRIPTION	QTY	UNIT	UNIT COST	TOTAL COST
I	General Requirements				
I.a	Temporary Facilities	1	lot		
Amount in Words					
I.b	Safety and Health	1	lot		
Amount in Words					
I.c	Electricity and Water Consumption	1	lot		
Amount in Words					
I.d	Mobilization and Demobilization	1	lot		
Amount in Words					
SUB-TOTAL I General Requirements					
II	Chemistry Lab. (Room B-21)				
II.a.	Site Preparation, Demolition of existing center/side laboratory tables, Demolition of existing floor, removal of existing doors, transfer of affected display cabinets and disposal of debris to the designated dumping site & Lay-out	1	lot		
Amount in Words					
II.b.	Concreting of floor	1	lot		
Amount in Words					
II.c.	Paintiing of floor	1	lot		
Amount in Words					
II.d.	Repair and Repainting of interior walls and ceiling	1	lot		

Amount in Words					
II.e.	Replacement of existing doors	1	lot		
Amount in Words					
II.f.	Plumbing (Sanitary & Water Lines)	1	lot		
Amount in Words					
II.g.	Gas line	1	lot		
Amount in Words					
II.h.	Fabrication and installation of one (1) unit blackboard	1	unit		
Amount in Words					
II.i.	Construction of two (2) units new laboratory center table.	2	units		
Amount in Words					
II.j.	Construction of one (1) unit teacher's table	1	unit		
Amount in Words					
II.k.	Construction of side table	1	unit		
Amount in Words					
II.l.	Electrical	1	lot		
SUB-TOTAL II Chemistry Lab. (Room B-21)					

III	Chemistry Laboratory 217 & 218				
III.a.	Site Preparation, Demolition of existing center laboratory tables and ceiling, transfer of affected display cabinets and disposal of debris to the designated dumping site & Lay-out	1	lot		
Amount in Words					
III.b.	Installation new of ceiling	1	lot		
Amount in Words					
III.c.	Repair and repainting of walls	1	lot		
Amount in Words					

III.d.	Replacement of existing doors and fixed glass windows	1	lot		
Amount in Words					
III.e.	Plumbing (Sanitary & Water Lines)	1	lot		
Amount in Words					
III.f.	Gas line	1	lot		
Amount in Words					
III.g.	Fabrication and installation of two (2) units blackboards (for Lab 217 & 218)	2	units		
Amount in Words					
III.h.	Construction of new four (4) units center laboratory table (2 units for Lab 217 & 2 units for Lab 218 218)	4	units		
Amount in Words					
III.i.	Construction of two (2) units teacher's table (for Lab 217 & 218)	2	units		
Amount in Words					
III.j.	Repair of side tables (for Lab 217 & 218)	2	units		
Amount in Words					
III.k.	Electrical	1	lot		
Amount in Words					
SUB-TOTAL III Chemistry Laboratory 217 & 218					
			GRAND TOTAL	PHP	
TOTAL AMOUNT IN WORDS:					

Submitted:

Date: _____

Signature over Printed Name

Name of Bidder's Representative

Position

Name of Bidder (Company)